



CELEBRATING 51 YEARS

MAY 6 - 10, 2026

ENTRIES CLOSE APRIL 15, 2026

EVERGREEN EQUESTRIAN PARK

MONROE, WA

Benefiting Equest Special Riders

Sponsored by:

The Morgan Horse Club of Washington State Inc

Approved by:



TABLE OF CONTENTS

DIRECTORY OF OFFICIALS & COMMITTEE CONTACTS.....	1
EVERGREEN EQUESTRIAN PARK FACILITY MAP.....	3
EVENT LOCATION & EMERGENCY SERVICES.....	4
LOCAL AREA LODGING.....	5
GENERAL RULES.....	11
SCHEDULE OF CHARGES.....	18
CLASS SCHEDULE.....	19
CLASSES OFFERED BY DIVISION.....	28
USDF STATEMENT ON ANIMAL WELFARE.....	45
WDAA MEMBERSHIP	46
MAAPP MINOR ABUSE PREVENTION.....	47
USDF RECOGNITION.....	48
ARABIAN HORSE ASSOCIATION SHOW RECOGNITION.....	49
UNITED PROFESSIONAL HORSEMAN’S ASSOCIATION.....	52
USEF CLASS ENTRY FORM.....	53
WAIVER & RELEASE OF LIABILITY FORM.....	55
NON USEF & ACADEMY ENTRY FORM.....	56
KEY CLASSIC YOUTH OF THE YEAR CONTEST ENTRY FORM	57
WESTERN VERSATILITY HIGHPOINT ENTRY FORM	58

DIRECTORY OF OFFICIALS & COMMITTEE CONTACTS

The success of this show would not be possible without the dedication and support of our officials and committee members. We extend our sincere thanks to each of you for your time, expertise, and commitment in helping bring this event to life.

Your willingness to share your knowledge, lend a helping hand, and support the many moving pieces of the show plays an essential role in creating a welcoming, well-organized experience for our riders, horses, and spectators. From planning and preparation to the countless details that take place throughout the show, your contributions help ensure that everything runs smoothly.



Coby Holowacz

USEF Judge

- In Hand Performance
- Performance



Karen Winn

USEF Judge

- Dressage
- Western Dressage



Ann Judge

USEF Judge

- Ranch Horse
- Trail
- Reining
- Working Western



Matt Kwapich

USEF Steward



Linda Collins

Promotions
(206) 200-2099



Nancy Harvey

Show Manager
(626) 290-8918

- Available May 6-10



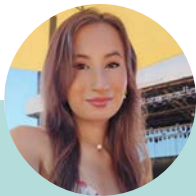
Marla Miller

Treasurer
(206) 300-1234



Carol Fletcher

Chair Person
(206) 755-560



Kayla Powlesland
Center Ring & Prize List
Designer
(206) 947-4308



Jim Coombes
Sponsorship
(360) 951-4628



Tracy Coombes
Sponsorship
(360) 951-4628



Sheri Hurst
Secretary
(619) 672-4503



Olyvia O'brien
Show Committee



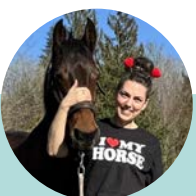
Kasey Mougine
Show Committee



Katherine Hobbs
Dressage Coordinator



Nicole Barbour
Show Committee



Denise Lester
Show Committee



Katie Hoover
Show Committee



Holly Gellner
Show Committee

EVERGREEN EQUESTRIAN PARK FACILITY MAP



EVENT LOCATION & EMERGENCY SERVICES



From Interstate 5, coming from the North, take Hwy. 2 at Everett, and follow it to Monroe. From Interstate 5, Coming from the South, take Interstate 405 at Renton and follow it past Bellevue and Kirkland, and then take Hwy. 522 to Monroe.

EMERGENCY SERVICES

EvergreenHealth Monroe is the primary hospital near the Evergreen State Fairgrounds, offering 24/7 emergency care and full medical services. Larger hospitals with expanded services are also available in Everett and Kirkland if needed.

Evergreen Health Emergency Department

14701 179th Ave SE, Monroe, WA 98272
(360) 794-7497

Providence Monroe Walk-In Care

19200 N Kelsey St, Monroe, WA 98272
(360) 794-7994

Show Office:

(626) 290-8918

VETERINARY ON CALL:

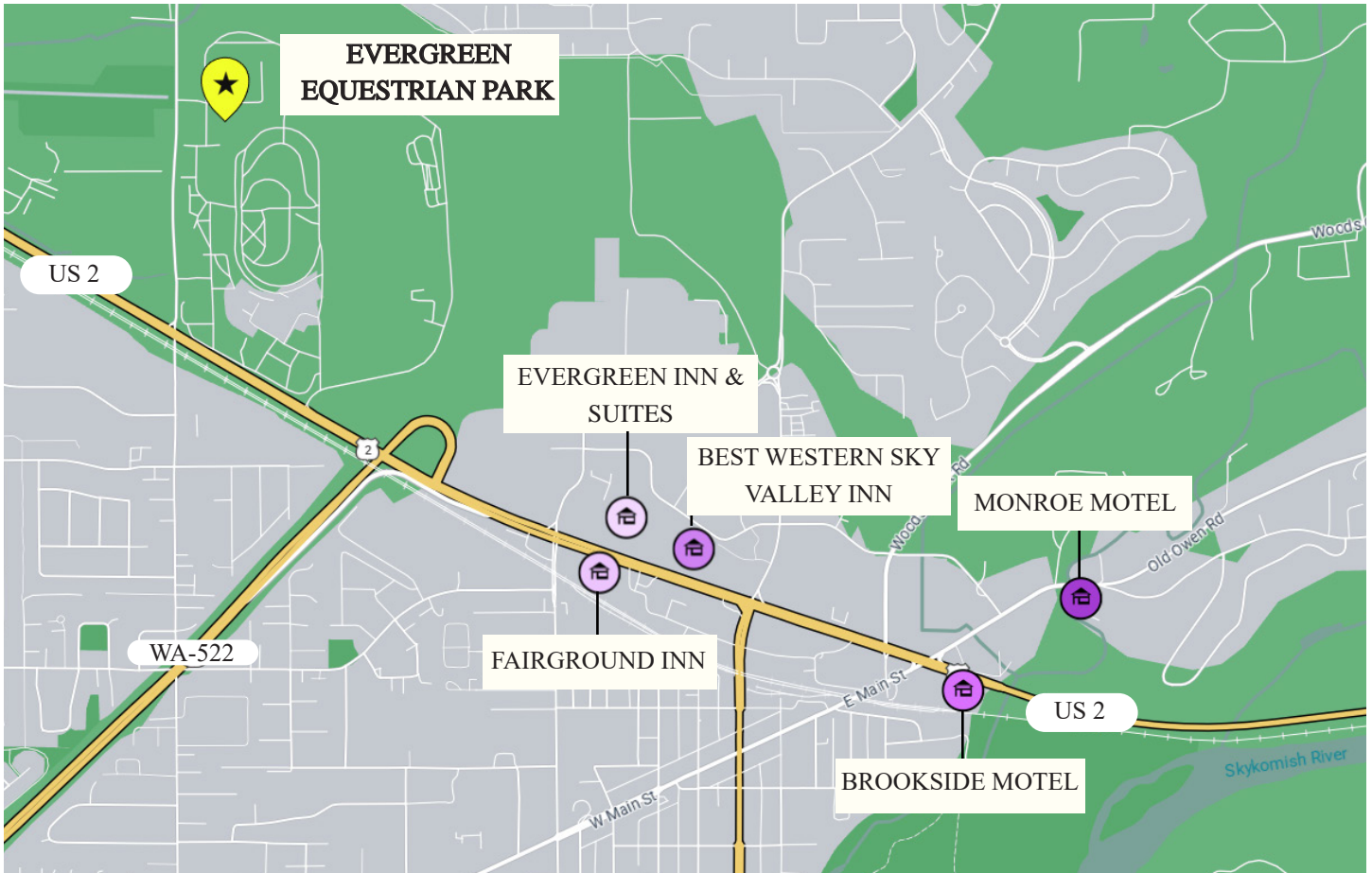


Pilchuck Veterinary Hospital

(360) 568-3111

(800) 208-9192

LOCAL AREA LODGING



LOCAL AREA LODGING:

Evergreen Inn & Suites

19103 US-2, Monroe, WA 98272
(360) 863-1900

Best Western Sky Valley Inn

19233 US-2, Monroe, WA 98272
(360) 794-3111

Fairground Inn

18950 US-2, Monroe, WA 98272
(360) 794-5401

Monroe Motel

20310 Old Owen Rd, Monroe, WA 98272
(360) 794-6751

Brookside Motel

19930 State Route 2, Monroe, WA 98272
(360) 794-8832

High Rock Castle

21632 High Rock Rd, Monroe, WA 98272
(425) 626-0761

Snohomish Inn

323 2nd St, Snohomish, WA 98290
(360) 568-2208

Hampton Inn & Suites - Woodinville

19211 Woodinville - Snohomish Rd NE, Woodinville,
WA 98072
(425) 788-9247

Hampton Inn & Suits - Seattle/Everett

2931 W Marine View Dr, Everett, WA 98201
(425) 349-4466

Best Western Cascadia Inn

2800 Pacific Ave, Everett, WA 98201
(425) 258-4141

SPECIAL THANKS TO



Special thanks to Kayla Powlesland and her company, Foxfield Landscape Design for providing the beautiful plants and flowers for our Center Ring and Winner's Circle.

Be sure to visit the Center Ring to see the full display — all featured plants are available for sale!

Inspired by our Exhibitor Party theme, Wild Wild West Coast, the design may look right out of the wild west, but all plants are perfectly suited for your Pacific Northwest backyard.

Stop by their booth inside the Main Arena!





WILD WILD WEST COAST PARTY

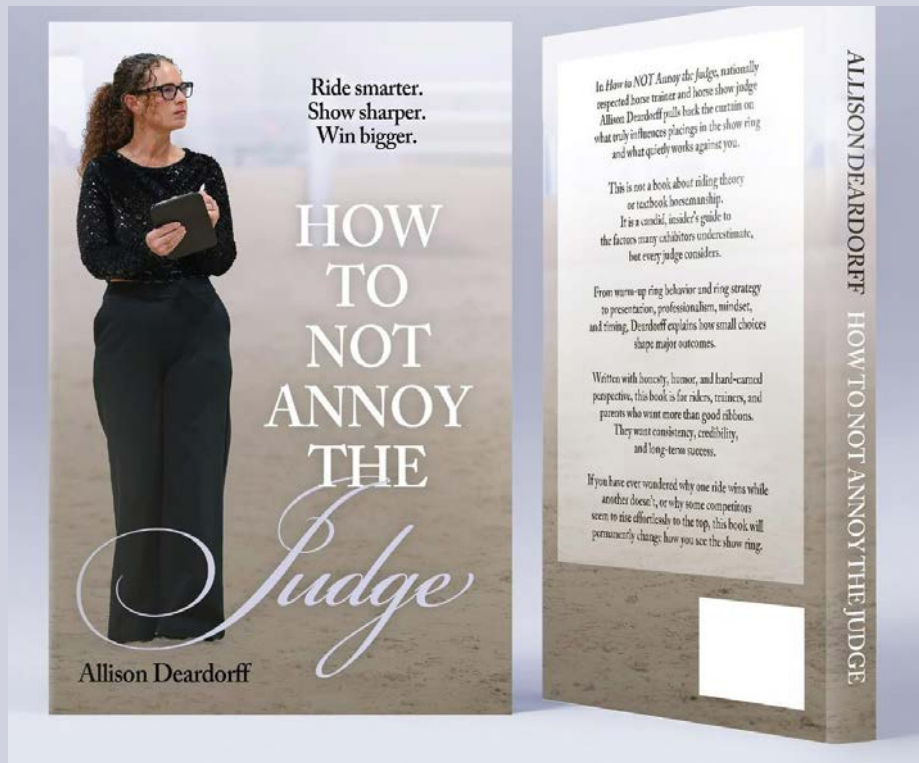
SATURDAY EVENING

Party starts around 6:30 PM

Swing through the saloon doors and join us for a night of dusty boots, west coast cool and wild outlaw line dancing. Learn to line dance and dance the night away with the South Fork Country Kickers!

Get ready for good food, great friends, and country dancing fun!
Don't forget to wear your best Wild Wild West outfit!

From the Rail to the Written Word...



We are so proud to celebrate one of our own at the Key Classic Benefit Horse Show!

**Join us for a special Book Signing with local trainer turned author,
Allison Deardorff,
as she introduces her new book!**

With years of experience in the show ring, Allison now shares the inside perspective every exhibitor, trainer, and horse show parent wishes they knew. This is a must-read for anyone who wants to elevate their performance and professionalism in the ring.

Stop by, say hello, grab a signed copy, and support one of our incredible local professionals who continues to give back to our horse show community.

You may bring your own book to be signed, she will have a few copies at the show, or you can order one here:



GOLF CARTS AVAILABLE FOR RENT



**LIMITED QUANTITY
FIRST COME FIRST SERVED**

Must rent for whole show May 6th - 10th.

**For availability, rates, & reservations
please contact Carol Fletcher-Churchill prior to the show:
d3ofnine@gmail.com**

*** All operators must hold a valid driver's license & comply with all showground rules
& safety policies.**

KEY CLASSIC BENEFIT
HORSE SHOW

BINGO!

Swing by the show office to grab your Bingo Card & get in on the fun!

Keep your ears open during the show — we'll be announcing lucky names throughout the event, so you won't want to miss a moment. Winners will also be posted at the office, so be sure to check back & see if it's your turn to celebrate!

One card per person — but plenty of chances to win some awesome prizes. Get ready to play, cheer, & maybe even shout BINGO!

GENERAL RULES

Every class offered herein which is covered by the rules and specifications of the current USEF rule book will be conducted and judged in accordance therewith. United States equestrian federation rules do not require the inclusion of full judging specifications in prize list and programs of approved shows, except classes not listed in the USEF rule book.

USEF MEMBERSHIP STATEMENT:

Life, senior active and junior active members shall be eligible to participate in all classes at regular competitions, eventing competitions at the modified level or above and combined driving competition at the advanced level, dressage, reining, vaulting competitions and endurance rides. A non-member may participate as a handler, rider, driver, owner, lessee, or agent at regular competitions, eventing competitions, dressage competitions, reining competitions and combined driving competitions upon payment of a show pass fee. Participants in the following classes are exempted from the requirements of this rule:

- 1) Leadline
- 2) Exhibitions
- 3) Games and races
- 4) Classes for 4-h members
- 5) Walk trot and academy classes. (Academy classes are classes limited to horses used regularly in a lesson program)
- 6) USDF introductory level tests, pas de Deux and quadrille classes
- 7) Assistant handlers in dressage sport horse breeding classes

USEF SAFE SPORT STATEMENT:

All USEF life and senior active members, as well as participants who have regular contact with minor athletes, are required to comply with the U.S. Center for Safesport training requirement to be eligible to participate in the competition. All participants must adhere to the U.S. Center for Safesport Code, USEF Safe Sport Policy, and the Minor Athlete Abuse Prevention policies.

USEF AMATEUR CERTIFICATION FOR EC AMATEUR MEMBERS:

EC amateur members, competing in amateur classes, must complete and sign a USEF membership application verifying they meet USEF amateur requirements. There is no charge. Membership must be completed online at www.usef.org.

USEF MEMBERSHIP:

Affidavits are no longer accepted for payment of non-member fees. Exhibitors must have a competing membership, either life, senior active or junior active member or pay a show pass fee. See next paragraph.

USEF NON-MEMBER PARTICIPATION:

If membership documentation is not submitted to the competition and the competition cannot verify such information, the exhibitor will be required to complete a show pass form and pay a non-refundable show pass fee of \$85.00. (Gr1309.2.B) Show passes must be purchased online at usef.org. A show pass is only valid for one competition and non-member participants (riders, drivers, handlers, vaulters, lungers, owners, lessees, and agents) are limited to obtaining no more than one (1) show pass per competition year.

WDAA MEMBERSHIP STATEMENT:

To be eligible to participate and/or compete as an exhibitor, owner, lessee, agent, coach, or trainer in any Western Dressage class or at any Federation Western Dressage Licensed Competition persons must be active members of WDAA or pay a non-member fee equal to the price of an annual membership for each competition. Exception: WDAA membership or non-member fee is not required at a Lite Licensed competition. Lessees are considered owners in connection with this membership requirement. In the event of an entry under multiple ownership, only one owner need be a Member or pay a non-member fee. The competition is responsible for listing either the active member or the owner that paid the non-member fee in the results. The competitions will be responsible for forwarding a list of the names of individuals who pay non-member fees at the competition to WDAA with the post competition report. Payment of non-member fees for the purpose of competing does not entitle the individual to any privileges of the WDAA membership.

GENERAL RULES CONT.

AHA MEMBERSHIP STATEMENT:

The following membership statement must appear in bold type in a prominent place in all prize lists.

EACH COMPETITOR (THIS INCLUDES AT LEAST ONE RECORDED OWNER AND ALL TRAINERS, DRIVERS, RIDERS, HALTER HANDLERS, COACHES AND THE PERSON(S) SIGNING THE ENTRY BLANK) IN AN ARABIAN HORSE ASSOCIATION RECOGNIZED ARABIAN DIVISION, AT THE TIME OF ENTRY INTO A COMPETITION, MUST SUBMIT A COPY OF A VALID AHA MEMBERSHIP/COMPETITION CARD, JOIN AHA OR PAY AN AHA SINGLE EVENT MEMBERSHIP FEE PER COMPETITOR.

WHEN AN AGENT SIGNS FOR THE OWNER AT AN AHA RECOGNIZED COMPETITION, BOTH THE OWNER AND AGENT MUST BE MEMBERS OF AHA OR PAY THE AHA SINGLE EVENT MEMBERSHIP. SINGLE EVENT MEMBERSHIP IS NOT ACCEPTABLE AT AHA REGIONAL OR NATIONAL COMPETITIONS. EXHIBITORS IN WALK-TROT CLASSES ARE EXEMPT FROM AHA MEMBERSHIP REQUIREMENTS AT QUALIFYING COMPETITIONS, BUT MUST HAVE AN AHA MEMBERSHIP WITH COMPETITION CARD AT AHA REGIONAL AND NATIONAL COMPETITIONS. EXHIBITORS IN LEAD LINE CLASSES OR PARENTS/GUARDIANS SIGNING FOR MINORS ARE EXEMPT FROM AHA MEMBERSHIP REQUIREMENTS.

(BOD 5/12)

SHARPS CONTAINERS - GR12104:

Competition management must place a minimum of one (1) sharps container per competition, regardless of whether stabling is provided.

A. If stabling is provided, for every fifty (50) occupied stalls, one (1) sharps container must be provided for the disposal of needles and other disposable sharp instruments. These containers must be placed in visible, accessible, and convenient locations in barns.

B. Sharps Containers: A sharps container is made of puncture-resistant plastic with leak-resistant sides and bottom. It has a tight fitting, puncture resistant lid, which does not allow sharps to come out of the container. Sharps containers must be properly labeled to warn of hazardous waste inside the container. Sharps containers must not be altered in any way from its manufactured form, such as removal of security measures or drilling of the plastic. Sharps containers must be protected from the elements as to not collect rainwater.

C. It is competition management's responsibility to dispose of contents of sharps containers when the

container is three-quarters (3/4) full, in accordance with community guidelines for proper disposal methods. Competition management may fine any individuals including trainers, owners, exhibitors, or their agents up to \$100.00 for improper disposal of needles or other sharp disposable instruments.

D. If local law has more stringent requirements than the above, related to sharps containers or disposal, local law will prevail. Competitions that fail to place the required number of containers on the competition grounds or dispose of the contents properly will be considered in violation of the rules and may be subject to penalty as determined by the CEO, their designee and/or the Hearing Committee.

ENTRY DEADLINES:

Entries close April 15, 2026 and must be postmarked no later than April 15 to avoid late entry fees.

DRESSAGE DIVISION LIMITS:

Space is limited for dressage and western dressage tests. There will be a limit of 50 tests per division and space will be allocated on a first-received basis. You will not be guaranteed a space simply by meeting the registration deadline. Dressage and Western Dressage horse/rider pairs will be limited to a maximum of three tests per division. Management reserves the right to reduce this to two tests to accommodate more horse/rider pairs. Dressage tests will begin no earlier than 8am Wednesday and Thursday. Late entries will be accepted only if ride times are still available.

LATE ENTRY FEES:

Entries postmarked after the closing date of April 15, 2026 will be charged a flat fee of \$25 per horse which will cover all classes entered by the horse.

In extreme circumstances, and upon payment of a \$50.00 fee, in addition to regular entry fees, a post entry may be accepted into a class after the one (1) hour deadline has passed. Entries must be in writing and signed by the Trainer (if you do your own training, you must sign) as well as the owner and the rider/driver/handler. No entries will be accepted over the telephone. All entries must be accompanied by the total entry fees, total stall fees, and USEF fees, payable in US dollars.

GENERAL RULES CONT.

All open checks on file in the show office will be closed and deposited at the end of the show. Entries must include a signed waiver and release of liability in addition to the entry form.

There will be a \$50 fee charged in addition to any bank charges on all returned checks. Checks returned for any reason must be replaced by cash, cashier's check or money order. No one will be allowed to show if a bad check or handling fee is outstanding. An Exhibitor will be notified of the returned check and if not settled within 10, days will be turned over to USEF for settlement. Show Management reserves the right to require cash, cashier's check or money orders from any exhibitor who has had a check returned to the show by the bank. Personal checks will not be cashed at the show office or Canadian currency exchanged for US currency. Due to the number of uncashed checks, refunds of amounts less than \$20 will be credited as a sponsorship.

TBA CLASSES:

Key Classic has allotted space for a limited number of TBA (To Be Announced) classes. TBA classes may be any class on the AMHA or ASB class list or that are recognized by USEF with the exception of dressage, cutting, reined cow or hunter/jumper. These classes may be placed throughout the schedule at the discretion of show management. The fee for a TBA class is \$50/class plus the class sponsorship and class entry fee. TBAs are awarded on a first come first served basis only and must be reserved by May 7, 2026 with the show secretary.

CHANGE IN ENTRIES:

Where exhibitors, trainers or stables wish to make a change in entries in any class, they are required to follow the procedure of scratching the existing entry and making a new entry with the Show Secretary's Office. Such changes shall be treated as post entries and charged the post entry fee. In the event of injury to a horse (Veterinarian's Certificate is required); exhibitors may post enter another horse as a replacement, but must pay the post entry fee.

FAILURE TO SHOW AN ENTRY:

Failure to show an Entry will constitute a forfeiture

of entry fees, except with a Veterinary Certificate which must be filed with the Show Secretary prior to the first class in which the horse is not shown unless excused by the Show Veterinarian. A \$30 Office Charge will be made on all cancellations of entries. No refund on stalls will be made unless the Show secretary is notified 10 days prior to The beginning of the show including classes canceled due to severe weather or other emergency. See USEF GR832 and USEF GR912. Refunds will be mailed approximately 30 days following the close of the show. Show management may cancel or combine classes which have fewer than 3 entries. Classes which have been combined may be split upon request if at least 6 horses have been entered. The decision to split a class is at the discretion of show management. This show will use the one-judge system. The Judge's decision in all classes will be final.

HEADGEAR:

All riders must wear ASTM/SEI approved headgear with properly fitting harness in the following:

- All classes where jumping is required and when jumping anywhere on the show grounds.
- Hunter Seat Equitation Classes.
- Dressage riders when warming up for and riding in Dressage classes (exception: Western Dressage)
- Leadline Riders at all times when mounted.

Protective headgear is acceptable in any other division or class without penalty by the judge. See GR801.

HEALTH REQUIREMENTS:

COGGINS:

All horses entering Washington must be accompanied by a record of a negative official test for Equine Infectious Anemia conducted within the past 12 months.

GR845 EQUINE VACCINATION RULE:

1. At Federation licensed competitions, horses entering the grounds must be accompanied by documentation of Equine Influenza Virus and Equine Herpes Virus (Rhinopneumonitis) vaccinations within six months prior to entering the stables. Horses not in compliance with this rule may be required to leave the competition grounds upon request by Competition Management.

GENERAL RULES CONT.

Documentation should consist of one of the following methods mentioned below. The frequency of vaccine administration should be per the vaccine manufacturers' or veterinarian's recommendations. It is recommended that vaccines are administered by or under the direction of a veterinarian.

2. In the case of vaccines administered by a veterinarian, the exhibitor, upon request by Competition Management, must provide documentation from the veterinarian documenting the horse in question received the vaccinations; name of the vaccines and date of vaccine administration.
3. In the case of vaccines administered by a person other than a veterinarian, the exhibitor, upon request by Competition Management, must provide a receipt of the vaccine purchase which is signed by the owner, or agent with care, custody, and control of the horse; name, serial number and expiration date of the vaccine; and date of vaccine administration.
4. In the case of a horse that is unable to receive either of the vaccinations due to a history of adverse reactions, the exhibitor, upon request by Competition Management, must provide a letter from the veterinarian on official letterhead stating that the horse in question cannot be vaccinated due to medical concerns and a log of temperatures taken twice daily for the seven days prior to entering the competition grounds. These horses must also have their temperature taken and logged twice daily while on the competition grounds. The log of temperatures should be provided to the Competition Management, steward, or technical delegate when requested.
5. Competition Management may not amend or enhance vaccination requirements without prior approval of the Veterinary Committee.

GATE HOLD:

A gate hold must be requested prior to the start of a performance. It will be granted only when horse/ rider are in consecutive classes and shall not exceed 3 minutes.

SHOW OFFICE:

The show office will open at 12:00pm Tue, May 8, 2025. The telephone number to the show office is (360) 805-6711. There will be a \$30 office charge per owner. The emergency veterinarian's name and phone number will be posted on the Show Office door.

CAMPER HOOKUP:

Camping spots are \$65 per night. There are 87 camper hookups available on a first paid; first served basis. Vehicles parked in hookup spots but not hooked up will still be charged the hookup fee of \$65 per night. Please pick up your camper permit at the show office. Showers available.

STABLING POLICY:

There are 312 10x10 permanent stalls with a five feet wide sliding door. All stalls (for horses or tack) are \$160 each.

BEDDING:

In lieu of having to purchase individual baled shavings, the show will be providing bulk shavings at the cost of \$60 per horse stall, including disposal. Shavings will be available in 2 locations on the fairgrounds. We ask that you use discretion when bedding your horse stalls throughout the 4 days of the show.

Those wishing to be stabled together must request this on the entry form and get the entries in early and together. Stalls must be paid as a whole. Trainers splitting the cost of stalls with their clients must make these arrangements personally and not through the Show Office. Stall fees are based on stabling available from 8:00am Tuesday May 5 to 9:00 pm. Sunday May 10. Absolutely no horses will be allowed on site prior to Tuesday at 8:00am without notification of the show secretary. Set ups are allowed to begin after noon on Monday May 4. Please notify the Show Secretary ahead of time if you will need stabling either before or after these dates. Early or late stabling (horse hotel) will be charged at \$40 per night, payable to Key Classic. Payment must accompany entries or the stalls will not be reserved. The stall chart will be posted on the guard booth at the entrance of the facility.

GENERAL RULES CONT.

Stall assignments are determined by years of participation and financial support. Stall fees must accompany all entries. Please indicate by name, on stall request, if you wish to be stabled near someone.

Dressage only stabling will be available from 8:00am Tuesday May 5 to 8:00pm Thursday May 7. The stabling fee will be \$60 per day, including bedding, payable with entry. These stalls are located on the outside of barn 105.

HAUL IN:

A fee of \$25 per day, will be charged (per horse) for those showing out of their trailers. Horses may not stay in trailers overnight and must be attended at all times. Please check in at the Show Office.

YOUTH OF THE YEAR:

Youth of the year contest details/schedule will be available at show office on May 7th.

AWARDS:

Ribbons will be awarded through 6th Place, except for Junior Exhibitor classes which will be awarded through 8th Place. Championship classes will be awarded ribbons through 6th Place.

HIGH POINT JR EXHIBITOR PERPETUAL TROPHY:

Sponsored by Chandel Morgans, Dean and Pam Ellingsen, Smithville, MO. This Perpetual Trophy to be awarded to the High Point Junior Exhibitor of the Key Classic Benefit Horse Show. Classes to count: All Junior Exhibitor Performance classes, i.e., Western Pleasure, English Pleasure, Hunter Pleasure, Pleasure Driving and Classic Under Saddle and Driving (no open classes to count); Showmanship, Equitation including Medal Classes. Points to Count 8,7,6,5,4,3,2,1. The classes will be calculated on a one horse; one rider combination. In other words, you can ride more than one horse, but points will not be combined. Points will count for same horse same rider in any combination of disciplines, i.e., same horse and rider in Western, Hunter, Driving, English Pleasure and Classic.

HIGH POINT WALK-TROT TROPHY:

All Walk-Trot classes to count. One rider, one horse combination. You can ride more than one horse, but points will not be combined. Points to count 8,7,6,5,4,3,2,1.

COVID-19 ACTION PLAN:

The USEF requires competitions to operate in accordance with state and local requirements. In the absence of state or local requirements, USEF recommends compliance with CDC guidelines. To mitigate the risk of spreading COVID-19, competition management can impose more restrictive requirements if they so choose. As requirements change frequently, show management will post all COVID-19 requirements under which our competition will operate. All persons attending Key Classic Benefit Horse Show are responsible for reviewing and complying with the posted requirements. Individuals may choose to wear a face covering/ mask even when it is not required. Anyone choosing to wear a face covering will not be penalized for doing so.

MORGAN ELIGIBILITY:

Horses shown in this division must be registered with the American Morgan Horse Association, Inc., or an organization having registry reciprocity (Canadian Morgan Horse Association, British Morgan Horse Society, Swedish Morgan Horse Society). Horses must be entered under their full registered name or if under one year of age be eligible for registration. Horses must be entered under the names of the owner(s) or lessee of record. A copy of the registration papers showing recorded ownership or proof of lease must be submitted with entry form at the time of making entry. Competition management is responsible for notifying exhibitors of this requirement. Owners (lessees), riders, drivers, handlers, coaches, and trainers of horses participating at Federation licensed competitions in all Morgan sections must be current members in good standing with the American Morgan Horse Association, Inc., or an organization having registry reciprocity (or pay a non-member fee. Set fees shall be payable to AMHA.) An original or a copy of the membership card must be provided to the competition unless the competition, at their discretion, confirms membership electronically with one of these

GENERAL RULES CONT.

organizations.

Lessees are considered owners in connection with this membership requirement. In the event of an entry under multiple ownerships, only one owner need be a member. Exceptions: Exhibitors in Leadline and/or Walk-Trot classes are exempt from this membership requirement. Additionally, a parent/guardian when only signing an entry blank for a minor is not required to be a member or pay a non-member fee.

AMATEUR NON-MEMBER:

Amateur cards are no longer available for non-members. Only active Federation members may obtain amateur certification. Every person who has reached his/her 18th birthday and competes in classes for amateurs under Federation rules must possess current amateur certification issued by the Federation. (Exception: This is not required for Opportunity classes except Dressage) (GR1307).

EVERGREEN STATE FAIRGROUNDS RULES AND REGULATIONS:

To ensure a smooth and successful show, all exhibitors are asked to read and adhere to the following rules. Blatant disrespect of the rules may constitute grounds for elimination.

- No smoking in the arena or barns.
- Dogs are permitted on the fairgrounds – on leash only when not in personal RV or vehicle. Owner must maintain control of the dog at all times. Owner must clean up after dog. Dogs will only be allowed in the grandstand of the main arena and NOT allowed ringside at any of the warm-up rings or outdoor arenas. Dogs that cause disruptions must be removed from the fairgrounds or secured in a vehicle. Show management and fairgrounds officials have the authority to enforce these requirements. Fairgrounds personnel or show management have the authority to summon a Park Ranger or County Animal Control if deemed necessary.

PARKING AREA (BY ORDER OF THE FIRE MARSHAL):

Vehicles may not be parked within 100 feet of the barns. Vehicles in the barn area must be loading or

unloading only.

BLOCKING OF BARN EXITS OR AISLES (BY ORDER OF FIRE MARSHAL):

Decorations, signage or temporary structures may not cover or block any building exit aisle way or cover any fire extinguishers, fire hoses, phones or electrical panels.

BARNES:

The fairgrounds does not allow stall front/panel removal. Under no circumstances is one permitted to disassemble any of the stalls or parts of the barn. To do so will jeopardize further use of the facilities by our show.

OUTSIDE BARN DECORATIONS:

Request to display decorations outside the barns should be submitted to the Evergreen State Fairground, one month prior to set up.

ARENA FOOTING:

Main Arena – 120' x 246', Dirt; Outdoor Warm Up arena – 128 x 254', Sand; Covered Warm Up Arena – 100' x 200', Sand; Sport Horse Arena 109 – 120' x 200', Sand; Arena Between Barns 105 & 106 – 73' x 164', Sand. In addition, several sand lunge rings.

MOTORIZED VEHICLE STATEMENT:

In accordance with USEF GR1301.7: Minors who do not have a valid driver's license which allows them to operate a motorized vehicle in the state in which they reside will not be permitted to operate a motorized vehicle of any kind, including, but not limited to, golf carts, motorcycles, scooters, or farm utility vehicles, on the competition grounds of licensed competitions. Minors who have a valid temporary license may operate the above described motorized vehicles as long as they are accompanied by an adult with a valid driver's license. The parent/legal guardian or individual who signs the entry blank as a parent or guardian of a minor operating a motorized vehicle in violation of this rule are solely responsible for any damages, claims, losses or actions resulting from that operation. Violations of this rule will be cause for penalties against those responsible for the child committing the offense. Wheelchairs and other

GENERAL RULES CONT.

mobility assistance devices for individuals with disabilities are exempt from this rule.

action at the discretion of competition management.

The unsafe use of personal electronic transport devices, as determined by the competition officials and management in their sole discretion, that do not require a driver's license to operate, including but not limited to segways, hover boards, and single wheeled scooters is prohibited on competition grounds.

Operating such devices in areas where people gather may be deemed "unsafe use" if there is a risk of harm to others. If the operator of the device is a minor, the parent/legal guardian or individual who signs the entry blank as a parent or guardian of a minor operating the device in violation of this rule is accountable and may be subject to penalties. Wheelchairs and other mobility assistance devices for individuals with disabilities are exempt from this rule. Please also refer to the equestrian park rules and regulations with regard to operation of motorized vehicles. No scooters, skateboards, bicycles, roller Blades, motorized carts and motorbikes. From Snohomish County Risk Management Office: These vehicles are not allowed on the fairgrounds and will be confiscated until end of show.

GOLF CART RENTAL & SAFETY STATEMENT:

All golf carts operated on competition grounds must comply with USEF rules and competition management policies. Golf carts may only be operated by individuals holding a valid driver's license. Renters assume full responsibility for the operation, condition, and safe use of the golf cart at all times.

Golf carts must not be operated in an unsafe or reckless manner, including but not limited to speeding, carrying more passengers than the manufacturer's capacity, operating under the influence of drugs or alcohol, or driving in restricted areas such as barns, warm-up arenas, or pedestrian-only zones.

The competition, facility, and management assume no liability for accidents, injuries, or damages resulting from the use or misuse of rented or personally owned golf carts. Violations of golf cart rules may result in revocation of driving privileges and/or disciplinary

SCHEDULE OF CHARGES

CLASSES:

Lead Line	no charge
Dressage Tests	\$40.00
In-Hand Classes	\$25.00
Performance Classes	\$25.00
Championship Classes	\$35.00
Late entry fee (one-time, per horse, flat fee)*	\$25.00
Post entry fee (within one hour of session start; in addition to class entry fee)	\$50.00
TBA Classes	\$50.00
Canceled Class Fee	\$30.00

PAYMENT

Returned check fee	\$50.00
Office Charge (per owner)	\$30.00

RV SPOTS:

RV Hook-up per night	\$65.00
Camping (No RV Hook-up) per night	\$65.00

HORSE STALLS:

Stalls – Horse or Tack (Tuesday-Saturday nights)	\$160.00
Dressage Stall and bedding – per night, Tuesday and /or Wednesday night only	\$60.00
Bedding (bulk shavings) – for entire show and disposal	\$60.00
Early arrival (horse hotel) – per night	\$40.00
Haul-in fee – per day	\$35.00

MEMBERSHIP FEES:

USEF Fee – per horse	\$25.00
AHA Fee - per horse	\$14.00
AHA Non-member Fee (Adult)	\$45.00
WDAA Non-member Fee (Adult)	\$55.00
WDAA Non-member Fee (Youth)	\$45.00
USEF Non-member Show Pass Fee - Limited to 1 pass per year	\$85.00

ATTENTION COMPETITORS

Each competitor is responsible for supplying management with correct applicable numbers (USDF and USEF) for horse, owner, rider, and trainer, before the day(s) of the competition.

The scores of competitors who fail to supply connect numbers may not be counted toward national awards.

CLASS SCHEDULE

WEDNESDAY MAY 6, 2026 - NOT TO START BEFORE 8:00AM

SPORT HORSE ARENA 109

- 301 Western Dressage, Intro – TOC, OTAB
- 302 Western Dressage, Intro – TOC, OTAB
- 303 Western Dressage, Intro – TOC, OTAB
- 304 Western Dressage, Basic – TOC, OTAB
- 305 Western Dressage, Basic – TOC, OTAB
- 306 Western Dressage, Basic – TOC, OTAB
- 307 Western Dressage, Level 1 – TOC, OTAB
- 308 Western Dressage, Level 1 – TOC, OTAB
- 309 Western Dressage, Level 1 – TOC, OTAB
- 310 Western Dressage, Level 2 – TOC, OTAB
- 311 Western Dressage, Level 2 – TOC, OTAB
- 312 Western Dressage, Level 2 – TOC, OTAB
- 313 Western Dressage, Level 3 – TOC, OTAB
- 314 Western Dressage, Level 3 – TOC, OTAB
- 315 Western Dressage, Level 3 – TOC, OTAB
- 316 Western Dressage Suitability, OTAB
- 317 Western Dressage Hack - OTAB

**** Western Dressage High Point Champion Awards** will be presented to the high point winner in three levels: Introductory, Basic and Level One and Above.

WEDNESDAY MAY 6, 2026 - NOT TO START BEFORE 4:00PM

LARGE OUTDOOR ARENA

- 201 Exhibition Ranch Horse Conformation, All ages Open, OTAB
- 202 Exhibition Ranch Horse Conformation, All ages Amateur To Handle, OTAB

< 30 Minute Break >

- 203 USEF Exhibition Ranch Rail Pleasure – Open, OTAB
- 204 USEF Exhibition Ranch Rail Pleasure – Green Horse, OTAB
- 205 USEF Exhibition Ranch Rail Pleasure – Amateur/Jr Ex, OTAB
- 206 USEF Exhibition Ranch Riding – Open, OTAB
- 207 USEF Exhibition Ranch Riding – Novice Horse, OTAB
- 208 USEF Exhibition Ranch Riding – Amateur/Jr Ex, OTAB
- 209 USEF EXHIBITION RANCH RIDING – CHAMPIONSHIP, OTAB

THURSDAY MAY 7, 2026 - NOT TO START BEFORE 8:00AM
SPORT HORSE ARENA 109

- 318 Morgan Introductory Level Test A
- 319 1382 A/HA/AA Introductory Level Test A
- 320 Morgan Introductory Level Test B
- 321 1382 A/HA/AA Introductory Level Test B
- 322 Morgan Introductory Level Test C
- 323 1382 A/HA/AA Introductory Level Test C
- 324 Morgan USEF Training Level, Test 1
- 325 790 A/HA/AA Training Level, Test 1
- 326 Morgan USEF Training Level, Test 2
- 327 790 A/HA/AA Training Level, Test 2
- 328 Morgan USEF Training Level, Test 3
- 329 AMHA Dressage Seat Medal
- 330 434 A/HA/AA English Dressage Seat Medal JTR
- 331 Morgan USEF First Level, Test 1
- 332 797 A/HA/AA First Level, Test 1
- 333 Morgan USEF First Level, Test 2
- 334 797 A/HA/AA First Level, Test 2
- 335 Morgan USEF First Level, Test 3
- 336 Morgan USEF Second Level, Test 1
- 337 1807 A/HA/AA Second Level, Test 1
- 338 Morgan USEF Second Level, Test 2
- 339 1807 A/HA/AA Second Level, Test 2
- 340 Morgan USEF Second Level, Test 3
- 341 Morgan USEF Third Level – TOC
- 342 815 A/HA/AA Third Level – TOC
- 343 Morgan USEF Third Level – TOC
- 344 815 A/HA/AA Third Level – TOC
- 345 Dressage Suitability
- 346 335 Arabian Sport Horse Under Saddle, Open
- 347 339 Arabian Sport Horse Under Saddle, ATR
- 348 773 HA/AA Sport Horse Under Saddle, Open
- 349 777 HA/AA Sport Horse Under Saddle, ATR

* **Morgan Dressage High Point Champion Awards** will be presented to the Morgan with the highest score in each of three levels: Introductory, Training and First Level and Above. The Rogue Hill Coachman Awards will also be presented to the Morgan with the highest score of any test in Training Level and Above.

THURSDAY MAY 7, 2026 - 8:00AM

LARGE OUTDOOR ARENA

- 210 Exhibition English or Western Trail In-Hand – Open, OTAB
- 211 Exhibition English or Western Trail – Walk-Trot/Walk-Jog, OTAB
- 212 Exhibition English or Western Trail – Amateur/Jr Ex, OTAB
- 213 Exhibition English or Western Trail – Open, OTAB
- 214 Exhibition English or Western Trail – CHAMPIONSHIP, OTAB

< Break >

- 215 Exhibition Reining – Open, OTAB
- 216 Exhibition Reining – 1st, 2nd yr, Green Horse, OTAB
- 217 Exhibition Reining – Non-Pro, OTAB
- 218 Exhibition Reining CHAMPIONSHIP, OTAB

THURSDAY MAY 7, 2026 - 1:00PM

MAIN ARENA

- 1 Morgan Mares In-Hand Halter
- 2 Exhibition Showmanship – Jr Ex 12-17, OTAB (Academy Exhibitors Welcome)
- 3 Exhibition Showmanship – Jr Ex 11 & Under, OTAB (Academy Exhibitors Welcome)
- 4 Morgan Geldings In-Hand Halter
- 5 Exhibition Showmanship – Adult (Academy Exhibitors Welcome)
- 6 Morgan Stallions In-hand Halter
- 7 Morgan Show CHAMPION In-hand Halter

< 5 minute Break >

- 8 Roadster to Bike
- 9 Morgan Classic Pleasure Driving – Jr Ex 17 & Under
- 10 Morgan Hunter Pleasure - Open
- 11 ASB Jr Exhibitor Three-Gaited Show Pleasure 17 & Under
- 12 Morgan Park Harness – Amateur/Jr Ex
- 13 English Pleasure Saddle Seat, OTAB
- 14 Morgan Hunter Pleasure – Jr Ex 13 & Under
- 15 ASB Adult Show Pleasure Driving
- 16 Morgan Hunter Pleasure – Jr Ex 14 -17
- 17 Morgan Pleasure Driving – Open
- 18 ASB 5 Gaited Show Pleasure – Open
- 19 ASB Hunter Country Pleasure
- 20 Walk/Trot Hunter Pleasure – Jr Ex 11 & under, OTAB
- 21 AMHA Western Seat Medal

THURSDAY MAY 7, 2026 - 7:00PM

MAIN ARENA

- 22 Morgan Park Harness – Open
- 23 ASB 3 Gaited – Open
- 24 Morgan Classic Pleasure Driving – Ladies
- 25 Walk/Jog Western Pleasure – Jr Ex 11 & under, OTAB
- 26 ASB Park Pleasure – Open
- 27 Morgan English Pleasure – Ladies
- 28 ASB 3 Gaited – Jr/Novice Horse
- 29 Morgan Hunter Pleasure – Ladies, Amateur
- 30 ASB 5 Gaited – Amateur/Jr Exhibitor
- 31 Morgan Western Pleasure – Ladies
- 32 Road Hack Open – OTAB
- 33 Morgan Classic Pleasure Saddle – Jr/Novice Horse
- 34 ASB Adult Three-Gaited Country Pleasure
- 35 Morgan Pleasure Driving – Jr/Novice Horse
- 36 ASB Jr Exhibitor Three-Gaited Country Pleasure 17 & Under
- 37 TBA
- 38 ASB 5-Gaited Country Pleasure
- 39 Morgan Park Saddle – Jr/Novice Horse
- 40 ASB Park Limit Horse
- 41 Opportunity Western Type – Open, OTAB
- 42 ASB 5 Gaited – Open

FRIDAY MAY 8, 2026 - 9:00AM

MAIN ARENA

*** Morgan Sport Horse Halter (on the line). Depending on number of entries Sport Horse classes 43-44 may start at 8:30.**

- 43 Morgan Sport Horse Mares In-Hand *
- 44 Morgan Sport Horse Stallions and Geldings In-Hand *
- 45 Morgan Sport Horse In-Hand CHAMPIONSHIP *

BREAK - 10 min

- 46 Morgan Pleasure Driving – Amateur/Jr Ex
- 47 Morgan Western Pleasure – Amateur
- 48 Walk/Trot Hunt Seat Equitation 11 & Under, OTAB
- 49 Morgan Hunter Pleasure – Youth
- 50 Walk/Jog Western Seat Equitation 11 & Under
- 51 Morgan Western Pleasure – Jr Horse
- 52 Morgan Sport Horse Under Saddle – Jr Ex 17 & Under
- 53 Morgan Classic Pleasure Driving – Open
- 54 ASB Park Pleasure – Jr/Novice Horse

- 55 Morgan Western Pleasure – Jr Ex 17 & Under
- 56 AMHA Saddle Seat Medal

FRIDAY MAY 8, 2026 - 1:00PM

MAIN ARENA

- 57 Morgan Park Harness – Jr/Novice Horse
- 58 Morgan Western Pleasure – Stallions & Geldings
- 59 Morgan Classic Pleasure Driving – Jr/Novice Horse
- 60 ASB Hunter Country Pleasure – Amateur
- 61 Walk/Jog Western Pleasure 11 & Under CHAMPIONSHIP, OTAB
- 62 Morgan Hunter Pleasure – Amateur
- 63 Morgan Pleasure Driving – Ladies
- 64 Opportunity Adult Equitation 18 years & Over Any Seat, OTAB
- 65 Morgan Western Pleasure – Mares
- 66 Bridle Path Hack – OTAB
- 67 Opportunity Saddle Seat Equitation 13 and Under, OTAB
- 68 ASB 3 Year Old Park Pleasure
- 69 Walk/Trot English/Classic Pleasure Saddle – Jr Ex 11 & Under, OTAB
- 70 Morgan Hunter Pleasure – Novice Horse
- 71 ASB Western Country Pleasure – Amateur
- 72 Morgan English Pleasure – Jr Ex 17 & Under
- 73 Adult Walk Trot/Jog Any Seat – OTAB
- 74 TBA
- 75 ASB 5-Gaited – Jr/Novice Horse
- 76 English Pleasure Driving – OTAB
- 77 Morgan Hunter Pleasure – Stallions & Geldings
- 78 AMHA Hunt Seat Medal On-the-Flat

FRIDAY MAY 9, 2026 - 6:30PM

MAIN ARENA

Parade of Dressage, Ranch and Reining Champions/High Point Winners to be held in the Main Arena.

- 79 ASB Fine Harness – Open
- 80 Morgan Pleasure Driving – 3 yr old
- 81 Morgan English Pleasure – Amateur
- 82 Morgan Western Pleasure – Novice Horse
- 83 ASB Adult Three -Gaited Show Pleasure
- 84 Morgan Hunter Pleasure – Ladies
- 85 Morgan Park Saddle – Open
- 86 ASB Country Pleasure Driving
- 87 Morgan Sport Horse Under Saddle – Open
- 88 Show Hack – OTAB
- 89 Morgan English Pleasure – Open
- 90 ASB 3 Gaited Country Pleasure Jr Ex Stake
- 91 Morgan Western Pleasure – Youth

- 92 Morgan English Pleasure – Jr/Novice Horse
- 93 Morgan Classic Pleasure Saddle – Jr Ex 17 & Under
- 94 Opportunity Saddle Seat Equitation 14-17, OTAB
- 95 Morgan Western Pleasure – Ladies Amateur
- 96 ASB 3 Gaited – Amateur/Jr Ex
- 97 Morgan Classic Pleasure Saddle – Open
- 98 Morgan Hunter Pleasure – Mares
- 99 ASB Open Park

Dessert Party! Join us by the In-Gate inside the Main Arena for a dessert party full of sweet treats!

SATURDAY MAY 9, 2026 - 8:30AM

MAIN ARENA

- 100 English Pleasure Driving CHAMPIONSHIP, OTAB
- 101 Morgan Western Pleasure – Gentleman
- 102 Morgan Hunter Pleasure – Jr Horse
- 103 Morgan Western Seat Equitation 17 and Under
- 104 Morgan Saddle Seat/Classic Seat Equitation 17 & Under
- 105 English Pleasure Hunter Seat Open – OTAB
- 106 Morgan English Pleasure – Youth
- 107 Single Bit – Open, OTAB
- 108 Morgan Hunt Seat Equitation 13 & under
- 109 Academy Performance Walk/Trot Ages 11 & Under, OTAB
- 110 Academy Equitation Walk/Trot Ages 11 & Under, OTAB
- 111 Morgan Hunt Seat Equitation 14 - 17
- 112 Morgan Classic Pleasure Saddle - Novice Rider
- 113 Academy Performance Walk/Trot Ages 12 & Over, OTAB
- 114 Academy Equitation Walk/Trot Ages 12 & Over, OTAB
- 115 Opportunity Western Type CHAMPIONSHIP, OTAB
- 116 Walk/Trot Saddle Seat/Classic Seat Equitation 11 & Under, OTAB
- 117 Academy Performance Walk/Trot/Canter all ages, OTAB
- 118 Opportunity Adult Equitation 18 years & Over CHAMPIONSHIP Any Seat, OTAB
- 119 Academy Equitation Walk/Trot/Canter all ages, OTAB
- 120 ASB Park Limit Horse - Stake
- 121 Road Hack CHAMPIONSHIP, OTAB

< Break >

- 122 Lead Line – 8 & Under, OTAB
- 123 ASB Hunter Country Pleasure – Amateur Stake
- 124 Walk/Trot Hunter Pl Jr Ex 11 & Under CHAMPIONSHIP, OTAB
- 125 ASB 5-Gaited Country Pleasure Stake
- 126 Morgan Park Saddle – Jr/Novice Horse CHAMPIONSHIP
- 127 Morgan Classic Pleasure Saddle – Ladies
- 128 ASB Western Country Pleasure Stake

- 129 Morgan Hunter Pleasure – Amateur Masters
- 130 ASB Park Pleasure Open Stake
- 131 Morgan Western Pleasure Jr Horse CHAMPIONSHIP
- 132 ASB Show Pleasure Driving Stake
- 133 Morgan Pleasure Driving Jr/Novice Horse CHAMPIONSHIP
- 134 Walk/Trot English/Classic Pleasure Jr Ex 11 & Under CHAMPIONSHIP, OTAB
- 135 Morgan Western Pleasure – Amateur Masters
- 136 ASB 3 Gaited Show Pleasure Jr Exhibitor Stake
- 137 Morgan Hunter Pleasure Limit Horse
- 138 UPHA Challenge Cup, Riders 17 & Under

< Break >

- 139 Morgan Park Harness Open CHAMPIONSHIP
 - 140 Morgan Hunter Pleasure Ladies CHAMPIONSHIP
 - 141 ASB Country Pleasure Driving Stake
 - 142 Morgan Sport Horse Under Saddle – Amateur
 - 143 ASB 3 Gaited Show Pleasure – Adult Stake
 - 144 Morgan Western Pleasure Ladies CHAMPIONSHIP
 - 145 ASB 3 Gaited – Open Stake
 - 146 Morgan Hunter Pleasure Jr Ex CHAMPIONSHIP
 - 147 ASB 5 Gaited Show Pleasure – Open Stake
 - 148 Morgan Classic Pleasure Driving Ladies Championship
 - 149 ASB 5 Gaited – Amateur/Jr Ex Stake
 - 150 ASB Fine Harness – Open Stake
 - 151 Morgan Pleasure Driving Amateur/Jr Ex CHAMPIONSHIP
 - 152 English Pleasure Saddle Seat CHAMPIONSHIP, OTAB
 - 153 TBA
 - 154 ASB 5 Gaited – Open Stake
- Wild Wild West (Coast) Party! You are invited to Key Classic's Wild Wild West (Coast!) Party. Dust off your cowboy boots and join us for some fun, food and line dancing. Join us at 6:30pm at the end of the Main Arena.**

HAPPY MOTHERS DAY
SUNDAY MAY 10, 2026 - 9:00AM
MAIN ARENA

Mother's Day Sweets & Sips (coffee & treats). Stop by Timber Creek Stables & Clayfield Stables for some Sweet treats, coffee, and tasty bites!

- 155 Roadster to Bike Stake
- 156 Morgan Pleasure Driving Open CHAMPIONSHIP
- 157 TBA
- 158 Morgan Hunt Seat Equitation 17 & Under CHAMPIONSHIP
- 159 ASB 3 Gaited – Amateur/Junior Ex Stake
- 160 Morgan Classic Pleasure Driving CHAMPIONSHIP
- 161 Single Bit CHAMPIONSHIP – Open, OTAB
- 162 Morgan Western Pleasure Jr Ex 17 & Under CHAMPIONSHIP
- 163 Morgan English Pleasure Jr/Novice Horse CHAMPIONSHIP
- 164 Walk/Jog Western Seat Equitation 11 & Under CHAMPIONSHIP, OTAB
- 165 Morgan Western Pleasure Amateur CHAMPIONSHIP
- 166 Saddle Seat/Classic Seat Equitation 17 & Under CHAMPIONSHIP, OTAB
- 167 Morgan Hunter Pleasure Jr Horse CHAMPIONSHIP
- 168 Morgan Sport Horse Under Saddle Open CHAMPIONSHIP

< Break >

- 169 Morgan Park Harness Jr/Novice Horse CHAMPIONSHIP
 - 170 ASB Park – Open Stake
 - 171 Morgan English Pleasure Amateur/Jr Ex CHAMPIONSHIP
 - 172 Walk/Trot Hunt Seat Equitation 11 & Under CHAMPIONSHIP, OTAB
 - 173 Morgan Western Seat Equitation 17 & Under CHAMPIONSHIP
 - 174 ASB 5 Gaited – Jr/Novice Horse Stake
 - 175 Morgan Park Harness Amateur/Jr Ex CHAMPIONSHIP
 - 176 Morgan Hunter Pleasure Amateur CHAMPIONSHIP
 - 177 Morgan English Pleasure Open CHAMPIONSHIP
 - 178 ASB Hunter Country Pleasure – Open, Stake
 - 179 Morgan Park Saddle Open CHAMPIONSHIP
 - 180 Exhibition Mother & Child Pleasure Walk-Trot Under Saddle Any Seat
 - 181 Morgan Hunter Pleasure Open CHAMPIONSHIP
 - 182 ASB 3 Gaited Country Pleasure – Adult Stake
 - 183 Morgan Classic Pleasure Under Saddle CHAMPIONSHIP
 - 184 English Pleasure Hunter Seat Open CHAMPIONSHIP, OTAB
 - 185 Walk/Trot Saddle Seat/Classic Seat Equitation 11 & Under CHAMPIONSHIP, OTAB
 - 186 Morgan Western Pleasure Open CHAMPIONSHIP
- Presentation of Junior Exhibitor High-Point and Amigo Bingson Memorial High-Point Awards to be held in the Main Arena after the last class.**

Thank you all for being part of our show this year!
Your energy, dedication, & support made every session meaningful.
We are so grateful you chose to spend your time with us & can't wait to see you at:



***C-Fair Morgan
Regional And
Open Horse Show***

July 29 - August 2, 2026

Judge: TBD

Dressage Judge: TBD

Working Western Judge: TBD

CLASSES OFFERED BY DIVISION

For complete class descriptions and judging specifications see the current USEF Rule Book, available online www.USEF.org. USEF and USDF membership information is contained within this premium material.

DRESSAGE DIVISION:

MORGAN DRESSAGE:

Dressage tests will be performed in an outdoor arena in either a 60m x 20m standard court or a 40m x 20m short court (in the interest of time, Introductory and Training level tests may be shifted to a 40m x 20m short court). The arena size will be specified on the ride time schedule. A competitor who does not enter the arena within 45 seconds after the entry bell is rung for the ride shall be eliminated. Tests may be called during the competition. Announcing the test is limited to reading the movement as it is written, once only. Unauthorized assistance by anyone is prohibited and is cause for elimination. Per USEF regulations, helmets and numbers must be worn at all times when a horse is being exercised or ridden. A horse and rider combination may enter each class one time only and may ride a maximum of three tests. Riding times and any arena changes will be emailed and posted to social media prior to the show and posted at the show office on Tuesday. Entries in this section are limited and must be in the hands of the show secretary by the entry closing date. If we receive more than a full day's worth of entries, riders will be asked to reduce their number of rides to two. Post entries for Dressage will only be accepted as scratches and availability allow. Show Management reserves the right to reject any entry, as well as cancel or combine classes as necessary. Management also reserves the right to change the order of the classes as they are listed in the prize list. For Test of Choice classes, please be sure to specify the test you choose to ride on your entry form. Highest percentage score of all riders entered in class determines winner regardless of the test ridden. In case of a tie, the rider with the highest "riders marks" (collective mark) will be the winner.

- 318 Morgan Introductory Level Test A
- 320 Morgan Introductory Level Test B
- 322 Morgan Introductory Level Test C
- 324 Morgan USEF Training Level, Test 1
- 326 Morgan USEF Training Level, Test 2
- 328 Morgan USEF Training Level, Test 3
- 331 Morgan USEF First Level, Test 1
- 333 Morgan USEF First Level, Test 2
- 335 Morgan USEF First Level, Test 3
- 336 Morgan USEF Second Level, Test 1
- 338 Morgan USEF Second Level, Test 2
- 340 Morgan USEF Second Level, Test 3
- 341 Morgan USEF Third Level – TOC
- 343 Morgan USEF Third Level – TOC
- 329 AMHA Dressage Seat Medal
- 345 Dressage Suitability

ARABIAN & HA/AA DRESSAGE & SPORT HORSE:

For rules relating to Arabian & Half Arabian Dressage please refer to the following sections in the USEF Rulebook:

AR-16 DRESSAGE SECTION

AR177 Conduct

Dressage tests will be performed in an outdoor arena in either a 60m x 20m standard court or a 40m x 20m short court (in the interest of time, Introductory and Training level tests may be shifted to a 40m x 20m short court). The arena size will be specified on the ride time schedule. A competitor who does not enter the arena within 45 seconds after the entry bell is rung for the ride shall be eliminated. Tests may be called during the competition. Announcing the test is limited to reading the movement as it is written, once only. Unauthorized assistance by anyone is prohibited and is cause for elimination. Per USEF regulations, helmets and numbers must be worn at all times when a horse is being exercised or ridden. A horse and rider combination may enter each class one time only and may ride a maximum of three tests. Riding times and any arena changes will be emailed and posted to social media prior to the show and posted at the show office on Tuesday. Entries in this section are limited and must be in the hands of the show secretary by the entry closing date. If we receive more than a full day's worth of entries, riders will be asked to reduce their number of rides to two. Post entries for Dressage will only be accepted as scratches and availability allow. Show Management reserves the right to reject any entry, as well as cancel or combine classes as necessary. Management also reserves the right to change the order of the classes as they are listed in the prize list. For Test of Choice classes, please be sure to specify the test you choose to ride on your entry form. Highest percentage score of all riders entered in class determines winner regardless of the test ridden. In case of a tie, the rider with the highest "riders marks" (collective mark) will be the winner.

For Sport Horse classes please refer to the following sections in the USEF Rulebook:

AR-17 SPORT HORSE SECTION

AR184 Sport Horse Under Saddle Class Procedures

- 319 1382 A/HA/AA Introductory Level Test A
- 321 1382 A/HA/AA Introductory Level Test B
- 323 1382 A/HA/AA Introductory Level Test C
- 325 790 A/HA/AA Training Level, Test 1
- 327 790 A/HA/AA Training Level, Test 2
- 332 797 A/HA/AA First Level, Test 1
- 334 797 A/HA/AA First Level, Test 2
- 337 1807 A/HA/AA Second Level, Test 1
- 339 1807 A/HA/AA Second Level, Test 2
- 342 815 A/HA/AA Third Level – TOC
- 344 815 A/HA/AA Third Level – TOC
- 346 335 Arabian Sport Horse Under Saddle, Open
- 347 339 Arabian Sport Horse Under Saddle, ATR
- 330 434 A/HA/AA English Dressage Seat Medal JTR
- 348 773 HA/AA Sport Horse Under Saddle, Open
- 349 777 HA/AA Sport Horse Under Saddle, ATR

WESTERN DRESSAGE – OTAB:

Western Dressage tests will be performed in an outdoor arena in either a 60m x 20m standard court or a 40m x 20m short court (in the interest of time, Introductory Level and Basic Level tests may be shifted to a 40m x 20m short court). The arena size will be specified on the ride time schedule. A competitor who does not enter the arena within 45 seconds after the entry bell is rung for the ride shall be eliminated. Tests may be called during the competition. Announcing the test is limited to reading the movement as it is written, once only. Unauthorized assistance by anyone is prohibited and is cause for elimination. Per USEF regulations, numbers must be worn at all times when a horse is being exercised or ridden. A horse and rider combination may enter each class one time only and will be limited to riding a maximum of three tests. WDAA rules prohibit a horse/ rider pair from riding the same test more than twice per show. Riding times and any arena changes will be emailed and posted to social media prior to the beginning of the show and posted at the show office on Tuesday. Entries in this section are limited and must be in the hands of the show secretary by the entry closing date. If we receive more than a full day's worth of entries, riders will be asked to reduce their number of rides to two. Post entries for Western Dressage will only be accepted as scratches and availability allow. Show Management reserves the right to reject any entry, as well as cancel or combine classes as necessary. Management also reserves the right to change the order of the classes as they are listed in the prize list. For Test of Choice (TOC) classes, please be sure to specify the test you choose to ride on your entry form. Highest percentage score of all riders entered in class determines winner regardless of the test ridden. In case of a tie, the rider with the highest "riders marks" (collective mark) be the winner.

- 304 Western Dressage, Basic – TOC, OTAB
- 305 Western Dressage, Basic – TOC, OTAB
- 306 Western Dressage, Basic – TOC, OTAB
- 301 Western Dressage, Intro – TOC, OTAB
- 302 Western Dressage, Intro – TOC, OTAB
- 303 Western Dressage, Intro – TOC, OTAB
- 307 Western Dressage, Level 1 – TOC, OTAB
- 308 Western Dressage, Level 1 – TOC, OTAB
- 309 Western Dressage, Level 1 – TOC, OTAB
- 310 Western Dressage, Level 2 – TOC, OTAB
- 311 Western Dressage, Level 2 – TOC, OTAB
- 312 Western Dressage, Level 2 – TOC, OTAB
- 313 Western Dressage, Level 3 – TOC, OTAB
- 314 Western Dressage, Level 3 – TOC, OTAB
- 315 Western Dressage, Level 3 – TOC, OTAB
- 316 Western Dressage Suitability, OTAB
(Open to all horses who have not competed in Western Dressage Hack)
- 317 Western Dressage Hack - OTAB

MORGAN HORSE DIVISION:

***Morgan Amateur/Junior exhibitor combined classes and Morgan Junior/Novice Horse combined classes in English Pleasure, Western Pleasure or Pleasure Driving will NOT be eligible for Morgan USEF HOTY Points.**

MORGANS IN-HAND

- 1 Morgan Mares In-Hand Halter
- 4 Morgan Geldings In-Hand Halter
- 6 Morgan Stallions In-hand Halter
- 7 Morgan Show CHAMPION In-hand Halter
(1st & 2nd place horses from, any class in this section)

MORGAN SPORT HORSE IN-HAND:

- 43 Morgan Sport Horse Mares In-Hand *
- 44 Morgan Sport Horse Stallions and Geldings In-Hand *
- 45 Morgan Sport Horse In-Hand CHAMPIONSHIP *
(Must have been entered, shown & judged in any class in this section. Champion chosen by the highest score in classes 43 & 44.)

MORGAN SPORT HORSE UNDER SADDLE:

- 52 Morgan Sport Horse Under Saddle – Jr Ex 17 & Under
- 87 Morgan Sport Horse Under Saddle – Open
- 142 Morgan Sport Horse Under Saddle – Amateur
- 168 Morgan Sport Horse Under Saddle Open CHAMPIONSHIP
(Must have been entered, shown & judged in any class in this section)

MORGAN CLASSIC PLEASURE DRIVING:

Classic Pleasure classes are open to amateurs only & must follow Classic Pleasure shoeing rules & regulations.

- 9 Morgan Classic Pleasure Driving – Jr Ex 17 & Under
- 24 Morgan Classic Pleasure Driving – Ladies
- 53 Morgan Classic Pleasure Driving – Open
- 59 Morgan Classic Pleasure Driving – Jr/Novice Horse
- 148 Morgan Classic Pleasure Driving Ladies Championship
(Must have been entered, shown & judged in class 24)
- 160 Morgan Classic Pleasure Driving CHAMPIONSHIP
(Must have been entered, shown & judged in any class in this section)

MORGAN CLASSIC PLEASURE SADDLE:

- 33 Morgan Classic Pleasure Saddle – Jr/Novice Horse
- 93 Morgan Classic Pleasure Saddle – Jr Ex 17 & Under
- 97 Morgan Classic Pleasure Saddle – Open
- 112 Morgan Classic Pleasure Saddle - Novice Rider
- 127 Morgan Classic Pleasure Saddle – Ladies
- 183 Morgan Classic Pleasure Under Saddle CHAMPIONSHIP
(Must have been entered, shown & judged in any class in this section)

MORGAN ENGLISH PLEASURE:

- 27 Morgan English Pleasure – Ladies
- 72 Morgan English Pleasure – Jr Ex 17 & Under
- 81 Morgan English Pleasure – Amateur
- 89 Morgan English Pleasure – Open
- 92 Morgan English Pleasure – Jr/Novice Horse
- 106 Morgan English Pleasure – Youth
- 163 Morgan English Pleasure Jr/Novice Horse CHAMPIONSHIP
(Must have been entered, shown & judged in class 92)
- 171 Morgan English Pleasure Amateur/Jr Ex CHAMPIONSHIP
(Must have been entered, shown & judged in class, 72, 81, 106)
- 177 Morgan English Pleasure Open CHAMPIONSHIP
(Must have been entered, shown, & judged in any class in this section)

MORGAN HUNTER PLEASURE:

- 10 Morgan Hunter Pleasure - Open
- 14 Morgan Hunter Pleasure – Jr Ex 13 & Under
- 16 Morgan Hunter Pleasure – Jr Ex 14 -17
- 29 Morgan Hunter Pleasure – Ladies, Amateur
- 62 Morgan Hunter Pleasure – Amateur
- 70 Morgan Hunter Pleasure – Novice Horse
- 77 Morgan Hunter Pleasure – Stallions & Geldings
- 49 Morgan Hunter Pleasure – Youth
(Open to riders 21 years & under. Stallions permitted.)
- 84 Morgan Hunter Pleasure – Ladies
- 98 Morgan Hunter Pleasure – Mares
- 102 Morgan Hunter Pleasure – Jr Horse
- 129 Morgan Hunter Pleasure – Amateur Masters
- 137 Morgan Hunter Pleasure Limit Horse
- 140 Morgan Hunter Pleasure Ladies CHAMPIONSHIP
(Must have been entered, showed, & judged in class 29, 84)
- 146 Morgan Hunter Pleasure Jr Ex CHAMPIONSHIP
(Must have been entered, showed, & judged in class 14, 16)
- 167 Morgan Hunter Pleasure Jr Horse CHAMPIONSHIP
(Must have been entered, showed, & judged in class 102)
- 176 Morgan Hunter Pleasure Amateur CHAMPIONSHIP
(Must have been entered, showed, & judged in class 29, 62, 129)
- 181 Morgan Hunter Pleasure Open CHAMPIONSHIP
(Must have been entered, showed, & judged in any class in this section)

MORGAN HUNT SEAT EQUITATION:

Contestants shall enter the ring and proceed at least once around the ring at each gait & on command reverse & repeat. Light contact with horse's mouth is required. (See USED, MO 159)

- 108 Morgan Hunt Seat Equitation 13 & under
- 111 Morgan Hunt Seat Equitation 14 - 17
- 158 Morgan Hunt Seat Equitation 17 & Under CHAMPIONSHIP
(Must have been entered, showed, & judged in any class in this section)

MORGAN PARK HARNESS:

- 12 Morgan Park Harness – Amateur/Jr Ex
- 22 Morgan Park Harness – Open
- 57 Morgan Park Harness – Jr/Novice Horse
- 139 Morgan Park Harness Open CHAMPIONSHIP
(Must have been entered, shown & judged in any class in this section)
- 169 Morgan Park Harness Jr/Novice Horse CHAMPIONSHIP
(Must have been entered, shown & judged in class 57)
- 175 Morgan Park Harness Amateur/Jr Ex CHAMPIONSHIP
(Must have been entered, shown & judged in class 12)

MORGAN PARK SADDLE:

- 39 Morgan Park Saddle – Jr/Novice Horse
- 85 Morgan Park Saddle – Open
- 126 Morgan Park Saddle – Jr/Novice Horse CHAMPIONSHIP
(Must have been entered, shown & judged in class 39)
- 179 Morgan Park Saddle Open CHAMPIONSHIP
(Must have been entered, shown & judged in any class in this section)

MORGAN PLEASURE DRIVING:

- 17 Morgan Pleasure Driving – Open
- 35 Morgan Pleasure Driving – Jr/Novice Horse
- 46 Morgan Pleasure Driving – Amateur/Jr Ex
- 63 Morgan Pleasure Driving – Ladies
- 80 Morgan Pleasure Driving – 3 yr old
- 133 Morgan Pleasure Driving Jr/Novice Horse CHAMPIONSHIP
(Must have been entered, shown & judged in class 35, 80)
- 151 Morgan Pleasure Driving Amateur/Jr Ex CHAMPIONSHIP
(Must have been entered, shown & judged in class 46)
- 156 Morgan Pleasure Driving Open CHAMPIONSHIP
(Must have been entered, shown & judged in any class in this section)

MORGAN SADDLE SEAT/CLASSIC PLEASURE SADDLE SEAT EQUITATION:

Contestants shall enter the ring and proceed at least once around the ring at each gait & on command reverse & repeat. Light contact with horse's mouth is required. (See USED, MO 159) Championship offered in OTAB Section, class 166)

- 104 Morgan Saddle Seat/Classic Seat Equitation 17 & Under

MORGAN WESTERN PLEASURE:

- 31 Morgan Western Pleasure – Ladies
- 47 Morgan Western Pleasure – Amateur
- 51 Morgan Western Pleasure – Jr Horse
- 55 Morgan Western Pleasure – Jr Ex 17 & Under
- 58 Morgan Western Pleasure – Stallions & Geldings
- 65 Morgan Western Pleasure – Mares
- 82 Morgan Western Pleasure – Novice Horse
- 91 Morgan Western Pleasure – Youth
- 95 Morgan Western Pleasure – Ladies Amateur

- 101 Morgan Western Pleasure – Gentleman
- 131 Morgan Western Pleasure Jr Horse CHAMPIONSHIP
(Must have been entered, shown & judged in class 51)
- 135 Morgan Western Pleasure – Amateur Masters
- 144 Morgan Western Pleasure Ladies CHAMPIONSHIP
(Must have been entered, shown & judged in class 31 or 95)
- 162 Morgan Western Pleasure Jr Ex 17 & Under CHAMPIONSHIP
(Must have been entered, shown & judged in class 55)
- 165 Morgan Western Pleasure Amateur CHAMPIONSHIP
(Must have been entered, shown & judged in 47, 95, or 135)
- 186 Morgan Western Pleasure Open CHAMPIONSHIP
(Must have been entered, shown & judged in any class in this section)

MORGAN WESTERN SEAT EQUITATION:

Contestants shall enter the ring and proceed at least once around the ring at each gait & on command reverse & repeat. Light contact with horse's mouth is required. (See USED, MO 159)

- 103 Morgan Western Seat Equitation 17 and Under
- 173 Morgan Western Seat Equitation 17 & Under CHAMPIONSHIP
(Must have been entered, shown & judged in any class in this section)

AMHA MEDAL SEAT CLASSES:

See USEF rules MO 164 - Mo 172.

- 21 AMHA Western Seat Medal
- 56 AMHA Saddle Seat Medal
- 78 AMHA Hunt Seat Medal On-the-Flat
- 329 AMHA Dressage Seat Medal

SADDLEBRED HORSE DIVISION:

All horses must be registered with the American Saddlebred Registry or the Canadian Livestock Records Corporation. They must be entered in their full registered names with registration numbers and under the names of the owner(s) of record with the A.S.R. or the C.L.R.C. A copy of the registration papers showing recorded ownership, or a copy of the registration papers with a Certificate of Eligibility to Show issued by the American Saddlebred Registry must be submitted with entry form at the time of making entry or submitted to the show office before show numbers will be released (or an affidavit completed) per GR1302.2a(5), unless the competition, at their discretion, confirms registration electronically with the American Saddlebred Registry or the Canadian Livestock Records Corporation. See GR1309.2a(5). Exception: Horses shown in any USEF Regular Competition prior to December 31, 1979, and Saddlebred-type ponies. See USEF SB101. PLEASE NOTE SB103.9 - Attention getting devices &/or other noisemakers (including but not limited to tape measures, blow horns, bamboo poles, explosives, fire extinguishers, baby powder, whips longer than, etc.) are not allowed in and around the warmup and competition rings during scheduled competition sessions. All such items will be confiscated, and offenders will be reported to the USEF. See also GR839.4i and GR803.

SADDLEBRED 5 GAITED:

30 ASB 5 Gaited – Amateur/Jr Exhibitor

42 ASB 5 Gaited – Open

75 ASB 5-Gaited – Jr/Novice Horse

149 ASB 5 Gaited – Amateur/Jr Ex Stake

(Must have been entered, shown & judged in class 30)

154 ASB 5 Gaited – Open Stake

(Must have been entered, shown & judged in any class in this section)

174 ASB 5 Gaited – Jr/Novice Horse Stake

(Must have been entered, shown & judged in class 75)

SADDLEBRED 3 GAITED:

23 ASB 3 Gaited – Open

28 ASB 3 Gaited – Jr/Novice Horse

96 ASB 3 Gaited – Amateur/Jr Ex

145 ASB 3 Gaited – Open Stake

(Must have been entered, shown & judged in any class in this section)

159 ASB 3 Gaited – Amateur/Junior Ex Stake

(Must have been entered, shown judged in class 96)

SADDLEBRED PARK:

40 ASB Park Limit Horse

99 ASB Open Park

120 ASB Park Limit Horse - Stake

170 ASB Park – Open Stake

(Must have been entered, shown & judged in any class in this section)

SADDLEBRED SHOW PLEASURE:

See USEF subchapter SB-8 and SB139.5.

- 11 ASB Jr Exhibitor Three-Gaited Show Pleasure 17 & Under
- 15 ASB Adult Show Pleasure Driving
- 83 ASB Adult Three -Gaited Show Pleasure
- 132 ASB Show Pleasure Driving Stake
 - (Must have been entered, shown & judged in class 15)
- 136 ASB 3 Gaited Show Pleasure Jr Exhibitor Stake
 - (Must have been entered, shown & judged in class 11)
- 143 ASB 3 Gaited Show Pleasure – Adult Stake
- 147 ASB 5 Gaited Show Pleasure – Open Stake

SADDLEBRED COUNTRY PLEASURE:

See USEF subchapter SB-USEF SB139.5.

- 8 ASB 5 Gaited Show Pleasure – Open
- 34 ASB Adult Three-Gaited Country Pleasure
- 36 ASB Jr Exhibitor Three-Gaited Country Pleasure 17 & Under
- 38 ASB 5-Gaited Country Pleasure
- 86 ASB Country Pleasure Driving
- 90 ASB 3 Gaited Country Pleasure Jr Ex Stake
- 125 ASB 5-Gaited Country Pleasure Stake
- 141 ASB Country Pleasure Driving Stake
 - (Must have been entered, shown & judged in class 86)
- 182 ASB 3 Gaited Country Pleasure Adult Stake

SADDLEBRED HUNTER COUNTRY PLEASURE:

See USEF subchapter SB-11 and SB-164.

- 19 ASB Hunter Country Pleasure
- 60 ASB Hunter Country Pleasure – Amateur
- 123 ASB Hunter Country Pleasure – Amateur Stake
 - (Must have been entered, shown & judged in class 60)
- 178 ASB Hunter Country Pleasure – Open, Stake
 - (Must have been entered, shown & judged in any class in this section)

SADDLEBRED WESTERN COUNTRY PLEASURE:

See USEF subchapter SB-10.

- 71 ASB Western Country Pleasure – Amateur
- 128 ASB Western Country Pleasure Stake
 - (Must have been entered, shown & judged in any class in this section)

SADDLEBRED PARK PLEASURE:

See USEF subchapter SB-12.

- 26 ASB Park Pleasure – Open
- 54 ASB Park Pleasure – Jr/Novice Horse
- 68 ASB 3 Year Old Park Pleasure
- 130 ASB Park Pleasure Open Stake
 - (Must have been entered, shown & judged in any class in this section)

SADDLEBRED FINE HARNESS:

79 ASB Fine Harness – Open

150 ASB Fine Harness – Open Stake

(Must have been entered, shown & judged in any class in this section)

ROADSTER DIVISION:

RD101 Eligibility

1. Roadster Horses: In order to compete all horses must be a Standardbred or Standardbred type. Roadster Ponies are not permitted to compete in Roadster Horse classes.
 - A. All horses competing in Federation Licensed Competitions must be properly identified and must obtain a Roadster Horse Identification number from the American Road Horse and Pony Association (ARHPA). An ARHPA Roadster Horse ID number for each horse must be entered on all entry forms for licensed competitions.
 - B. Only one unique ARHPA Roadster Horse ID Number will be issued per horse. This unique ID number must subsequently remain with the horse throughout its career. Anyone knowingly applying for a duplicate ID Number for an individual horse may be subject to disciplinary action.
 - C. The Federation and/or ARHPA as applicable must be notified of any change of ownership and/or competition name of the horse. Owners are requested to notify the Federation and/or ARHPA as applicable of corrections to previously submitted information, e.g., names, addresses, breed registration, pedigree, or markings.
 - D. The ARHPA Roadster Horse ID application is available from the ARHPA or the Federation office, or it can be downloaded from the ARHPA or Federation website or completed in the competition office. Competition management is responsible for notifying exhibitors of this requirement in their prize list.

Owners, riders, drivers, and trainers of horses participating at Federation licensed competitions in the Roadster Division must be current members in good standing with the American Road Horse and Pony Association. Originals or copies of the above listed membership cards must be provided to the competition unless at its discretion the membership can be confirmed electronically with either the AHHS or the ARHPA office. Lessees are considered owners in connection with these membership requirements. In the event of an entry under multiple ownership, only one owner need be a member of the required organization. Except as may otherwise be mandated by local law, protective headgear is strongly recommended for everyone showing in any class in the Roadster Division as outlined in GR801.4, .7 and .8. Except as may otherwise be mandated by local law, while riding or driving anywhere on the competition grounds, all juniors riding or driving in Roadster to Bike or Roadster Under Saddle classes must wear properly fitting protective headgear which passes or surpasses ASTM (American Society for Testing and Materials)/ SEI (Safety Equipment Institute) standards for equestrian use and carries the SEI tag as specified in GR801. Harness must be secured and properly fitted. A matching cover may be worn over the protective headgear or the protective headgear may be painted in matching stable colors. See USEF RD101 through RD113 for full specifications.

8 Roadster to Bike

155 Roadster to Bike Stake

(Must have been entered, shown & judged in any class in this section)

OPEN TO ALL BREEDS:

ACADEMY DIVISION:

Open to all seats. The Academy division is created for students in lesson programs. Academy horses must be school horses regularly used for Lessons in a public or private (family owned) lesson program, and must not be in training. Open to any breed of horse or pony. Stallions are prohibited. Protective headgear is mandatory for riders under the age of 18 and strongly recommended to all other riders 18 and over.

Riders in academy classes may not cross enter in any other class in the performance division at this show and must have only shown in the academy division at any other show. Horses may cross enter in other classes at the show with a rider that is not in this division. NOT USEF. Riders are exempt from the \$30.00 non-member USEF fee.

- 109 Academy Performance Walk/Trot Ages 11 & Under, OTAB
- 110 Academy Equitation Walk/Trot Ages 11 & Under, OTAB
- 113 Academy Performance Walk/Trot Ages 12 & Over, OTAB
- 114 Academy Equitation Walk/Trot Ages 12 & Over, OTAB
- 117 Academy Performance Walk/Trot/Canter all ages, OTAB
- 119 Academy Equitation Walk/Trot/Canter all ages, OTAB

ENGLISH PLEASURE HUNTER SEAT – OPEN TO ALL BREEDS:

Open to stallions, mares and geldings. To be shown according to breed type at a walk, trot, extended trot and canter both ways of the ring. To be judged on manners, performance, presence, quality and conformation.

- 105 English Pleasure Hunter Seat Open – OTAB
- 184 English Pleasure Hunter Seat Open CHAMPIONSHIP, OTAB
(Must have been entered, shown & judged in any class in this section)

ENGLISH PLEASURE DRIVING – OPEN TO ALL BREEDS:

Open to stallions, mares and geldings. To be shown according to breed type at a walk, trot, and extended trot both ways of the ring. To stand quietly in the lineup and back readily. To be judged on manners, performance, presence, quality and conformation.

- 76 English Pleasure Driving – OTAB
- 100 English Pleasure Driving CHAMPIONSHIP, OTAB
(Must have been entered, shown & judged in any class in this section)

OPPORTUNITY WESTERN TYPE – OPEN TO ALL BREEDS:

To be shown according to breed type at a walk, jog trot/intermediate gait, and lope both ways of the ring on a reasonably loose rein, without undue restraint. Entries shall be penalized for the wrong lead; special emphasis on the walk. Judged on performance 60%; conformation 30%; appointments 10%. (USEF unrated)

- 41 Opportunity Western Type – Open, OTAB
- 115 Opportunity Western Type CHAMPIONSHIP, OTAB
(Must have been entered, shown & judged in any class in this section)

ENGLISH PLEASURE SADDLE SEAT – OPEN TO ALL BREEDS:

Open to stallions, mares and geldings. To be shown according to breed type at a walk, trot, extended trot and canter both ways of the ring. To be judged on manners, performance, quality and apparent ability to give a good pleasure ride.

13 English Pleasure Saddle Seat, OTAB

152 English Pleasure Saddle Seat CHAMPIONSHIP, OTAB

(Must have been entered, shown & judged in any class in this section)

SHOWMANSHIP – Open To All Breeds:

2 Exhibition Showmanship – Jr Ex 12-17, OTAB (Academy Exhibitors Welcome)

3 Exhibition Showmanship – Jr Ex 11 & Under, OTAB (Academy Exhibitors Welcome)

5 Exhibition Showmanship – Adult (Academy Exhibitors Welcome)

OPPORTUNITY ADULT EQUITATION – OPEN TO ALL BREEDS:

64 Opportunity Adult Equitation 18 years & Over Any Seat, OTAB

118 Opportunity Adult Equitation 18 years & Over CHAMPIONSHIP Any Seat, OTAB

(Must have been entered, shown & judged in any class in this section)

SADDLE SEAT EQUITATION DIVISION – OPEN TO ALL BREEDS:

See USEF EQ-116 – EQ-122 (USEF Rules and Patterns apply)

67 Opportunity Saddle Seat Equitation 13 and Under, OTAB

94 Opportunity Saddle Seat Equitation 14-17, OTAB

138 UPHA Challenge Cup, Riders 17 & Under

(Open to all saddle seat equitation riders, 17 years of age and under, riding a mare or gelding of any breed. No Minimum number of entries is required to fill a class. Showmanship is paramount throughout the class. Riders compete at the walk, trot and canter both ways of the ring, line up, and a minimum of the top four (4) riders must be worked individually at the mandatory workout; more may be worked at the judge's discretion. Showmanship is a primary factor throughout the class, therefore, "Show your horse" is no longer a necessary or acceptable test. The mandatory workout in all qualifying competitions (except walk/trot classes) is: "Trot a serpentine to the opposite end of the ring. Return down either rail at a show trot." The proper calling of the gaits shall be "walk, show trot and canter". One UPHA Challenge Cup win eliminates that rider from further competition in qualifying classes that season, with the exception of the 11 and under age group. See USED sub-chapter EQ-3, EQ118.17e.2. Judging is based on 60% rail work and 40% on the individual workout. The first four places are eligible for the UPHA National or Junior Challenge Cup Championships. See USEF EQ118.17b. Open to mares and geldings only. Horses to be fitted and shown according to breed type. Showman to demonstrate ability to lead, move and turn his/her animal and perform other tests as the judge directs. Only one exhibitor shall be allowed in the ring to shoe each horse.)

166 Saddle Seat/Classic Seat Equitation 17 & Under CHAMPIONSHIP, OTAB

(Must have been entered, shown & judged in class 67, 94, 104 or 138)

WALK-TROT/JOG EQUITATION DIVISION - OPEN TO ALL BREEDS:

An EQUITATION class for beginning riders 11 years and under. Tack and appointments suitable to seat. To be shown both ways of the ring at a walk and trot or jog. Not to canter. Judged on seat, hands and general horsemanship. Suitability of mount to rider to be considered. Rider must not have been judged in ANY saddle class, test or pattern that has required a canter in a recognized or non-recognized competition. No cross- entry with any class to canter in this show.

- 48 Walk/Trot Hunt Seat Equitation 11 & Under, OTAB
- 50 Walk/Jog Western Seat Equitation 11 & Under
- 116 Walk/Trot Saddle Seat/Classic Seat Equitation 11 & Under, OTAB
- 164 Walk/Jog Western Seat Equitation 11 & Under CHAMPIONSHIP, OTAB
(Must have been entered, shown & judged in class 50)
- 172 Walk/Trot Hunt Seat Equitation 11 & Under CHAMPIONSHIP, OTAB
(Must have been entered, shown & judged in class 48)
- 185 Walk/Trot Saddle Seat/Classic Seat Equitation 11 & Under CHAMPIONSHIP, OTAB
(Must have been entered, shown & judged in class 116)

WALK-TROT/JOG PLEASURE DIVISION – OPEN TO ALL BREEDS:

A pleasure class for beginning riders 11 years and under. Tack and appointments suitable to seat. To be shown both ways of the ring at a walk and trot or jog. Not to canter. Judged on manners, performance, and suitability of mount to rider to be considered. Rider must not have been judged in ANY saddle class that has required a canter in a recognized or non-recognized competition. No cross-entry with any class to canter in this show.

- 20 Walk/Trot Hunter Pleasure – Jr Ex 11 & under, OTAB
- 25 Walk/Jog Western Pleasure – Jr Ex 11 & under, OTAB
- 61 Walk/Jog Western Pleasure 11 & Under CHAMPIONSHIP, OTAB
(Must have been entered, shown & judged in class 25)
- 69 Walk/Trot English/Classic Pleasure Saddle – Jr Ex 11 & Under, OTAB
- 73 Adult Walk Trot/Jog Any Seat – OTAB
- 124 Walk/Trot Hunter Pl Jr Ex 11 & Under CHAMPIONSHIP, OTAB
(Must have been entered, shown & judged in class 20)
- 134 Walk/Trot English/Classic Pleasure Jr Ex 11 & Under CHAMPIONSHIP, OTAB
(Must have been entered, shown & judged in class 69)

MISCELLANEOUS – OPEN TO ALL BREED CLASSES:

- 32 Road Hack Open – OTAB
(To be shown at a walk, trot, road trot, canter, hand gallop both ways of the ring and to back readily. At any time during the class the judge may ask horses to halt and walk off on a loose rein. Excessive speed at the hand gallop should be penalized. To be judged on performance with proper cadence and balance, manners and suitability for a road hack 60%; type and conformation 40%)
- 66 Bridle Path Hack – OTAB
(Hunter type horse to be shown at a walk, trot, or canter and hand gallop both ways of the ring. To back easily and stand quietly. Emphasis is placed on actual suitability to purpose.)
- 88 Show Hack – OTAB
(Competitors to enter the ring in a counterclockwise direction at a normal trot. Horse must have natural action. Elevation and high knee action are not to be emphasized. Horses must be balanced and show vitality, animation, presence, clean fine limbs and supreme quality typical of the breed shown. Soundness is required. Light contact must be maintained with all reins at all gaits. Horses may be shown with a braided mane and tail. Braids may be secured with tape, yarn, or rubber bands. Decorations and cavesson other than dressage types are prohibited. Unconventional tack such as figure eight, drop or flash

nosebands are not permitted and not allowed. Acceptable hack attire is required, consisting of conservatively colored coat, breeches and boots. A conservatively colored hunt cap or derby is required. Formal attire consisting of white breeches, top hat and tails may be worn. Spurs, whip or crop optional at the exhibitor's discretion.

Gaits: Walk - a four beat gait: straight, true and flat-footed. Trot - a two-beat gait: free moving, straight, rider maintaining light contact with the horse's mouth at all times. Canter - a three-beat gait: straight on both leads, smooth. Normal, collected and extended gaits to be called for both ways of the ring. Rider will post the normal trot, sit the collected trot, and post the extended trot. Refer to USEF NS148-NS151. At the discretion of the judge, horses while on the rail may be asked to halt and rein back. Horses shall be able to perform all of these gaits with a noticeable transition between the normal, collected and extended gaits. Horses must appear to be under complete control and easily ridden. Obedience is a prime importance. To be judged on performance, manners, quality and conformation. NOT USEF)

107 Single Bit – Open, OTAB

Horses are to be shown in a snaffle bit only and can use a running martingale, German martingale or draw rein, if desired. Horse/rider combinations may not cross enter into another division. Horses are to be shown at the walk/trot/canter both directions of the arena.)

121 Road Hack CHAMPIONSHIP, OTAB

(Must have been entered, shown and judged in class 32)

122 Lead Line – 8 & Under, OTAB

(Open to beginning riders who are at least 2 but less than 7 years old (GR103) and disabled riders on mares or geldings. To be led from the ground. The leader must be at least 16 years old (USED GR103). Safety is of the utmost importance in presentation. Tack and attire. It is required that equipment fit the rider with rider's feet in the stirrups. Failure to comply will result in elimination and the entry will be asked to leave. Attire of the rider shall include Saddle Seat, Hunter Seat, Western Seat, Dressage Seat, Side-Saddle, or Roadster Silks. Protective headgear must be worn by riders in lead line classes at all times while mounted. See USEF GR801 EC EFF 03/21/11. Riders may not be tired in the saddle in any way. Riders may be lined up side by side or head to tail. Not to mount or dismount. Entries will not be asked to back. Judged on seat, hands and general horsemanship. Suitability of mount to rider to be considered. No cross entry to any other ridden/driven class in this show. NOT USEF)

161 Single Bit CHAMPIONSHIP – Open, OTAB

(Must have been entered, shown and judged in class 107)

180 Exhibition Mother & Child Pleasure Walk-Trot Under Saddle Any Seat

(A mother and child of any age to ride any seat. Mother will ride first direction of the ring; child rides the second direction. Walk and trot only. NOT USEF)

EXHIBITION RANCH RIDING/ EXHIBITION RANCH PLEASURE – NON USEF:

Refer to USEF Morgan division for rules & scoring. The purpose of Ranch Pleasure should reflect the versatility, attitude, and movement of a working horse. The horse's performance should simulate a horse working outside the confines of an arena and that of a working ranch horse. This class should show the horse's ability to work at a forward, working speed while under control of the rider. Light contact should be rewarded and the horse shall not be shown on a full drape of reins. The overall manners and responsiveness of the horse while performing the maneuver requirements and the horse's quality of movement are the primary considerations. Horses should NOT perform or be rewarded for performing gaits as they do in Western Pleasure. The horses are to be presented in a more forward-moving style than the typical Western Pleasure horse. The horse and rider will be scored on movement, which is cadence and rhythm of gaits, smoothness and consistency in performance, along with how they perform on the optional maneuvers. For rules regarding correct Western appointments, refer to MO132. The required gait maneuvers will include the walk, jog, and lope of both directions; and the extended jog and extended lope going at least one direction; as well as stops, and a back.

Optional maneuvers are side pass, turns of 360 degrees or more, change of lead (simple or flying), walk, jog or lope over a pole(s); or some combination of maneuvers that would be reasonable for a ranch horse to perform.

- EXHIBITION RANCH RIDING: Each horse will work individually, performing both required and optional maneuvers, and scored on the basis of 0 to 100, with 70 denoting an average performance.

- EXHIBITION RANCH PLEASURE: Horses will work as a group on the rail and will be asked to perform the required maneuvers only. The overall cadence and performance of the gaits should be free-flowing and ground covering at all gaits, with an emphasis on forward movement. Transitions should be performed where designated, with smoothness and responsiveness.

202 Exhibition Ranch Horse Confirmation, All ages Amateur To Handle, OTAB

201 Exhibition Ranch Horse Confirmation, All ages Open, OTAB

203 USEF Exhibition Ranch Rail Pleasure – Open, OTAB

204 USEF Exhibition Ranch Rail Pleasure – Green Horse, OTAB

205 USEF Exhibition Ranch Rail Pleasure – Amateur/Jr Ex, OTAB

206 USEF Exhibition Ranch Riding – Open, OTAB

207 USEF Exhibition Ranch Riding – Novice Horse, OTAB

208 USEF Exhibition Ranch Riding – Amateur/Jr Ex, OTAB

209 USEF EXHIBITION RANCH RIDING – CHAMPIONSHIP, OTAB

(Must have been entered, shown and judged in any class in this section)

EXHIBITION TRAIL NON-USEF:

Refer to USEF Morgan division for rules. Horses may be ridden in English or Western tack. Trail horses are required to work over and through obstacles. No horse may enter the trail course area until the course and the judge are ready. Riders will be permitted to inspect the course on foot during the Judge's instructions prior to the start of the class. Tests which may be required are negotiating gate, carrying objects from one part of arena to another, riding through water, over logs or simulated brush, crossing a bridge, backing through obstacles, side passing, and performing over any reasonable conditions encountered along the trail. Course to include a minimum of six obstacles. Two or more horses may be entered by the same exhibitor and the same rider may elect to show more than one horse. Obvious unsoundness must be disqualified with no prize awarded. Rail work shall not be required.

210 Exhibition English or Western Trail In-Hand – Open, OTAB

211 Exhibition English or Western Trail – Walk-Trot/Walk-Jog, OTAB

212 Exhibition English or Western Trail – Amateur/Jr Ex, OTAB

213 Exhibition English or Western Trail – Open, OTAB

214 Exhibition English or Western Trail – CHAMPIONSHIP, OTAB

(Must have been entered, shown and judged in class 212, or 213)

EXHIBITION REINING:

Refer to USEF Morgan division for rules. The same rider does not have to show the horse in both the qualifying class and the championship. Open See USEF RN104. Non – Pro limited to either a non-pro or youth rider who has not earned over \$250 in NRHA and or 20 NRHA youth points, and/or has not won any Reining World Titles at any breed recognized event. First Second Year Green Horse shall not have been shown in any reining class in any prior two years (this includes showing in a snaffle bit or hackamore). Horses may be shown in a snaffle bit or hackamore with one or two hands or with any legal bit.

215 Exhibition Reining – Open, OTAB

216 Exhibition Reining – 1st, 2nd yr, Green Horse, OTAB

217 Exhibition Reining – Non-Pro, OTAB

218 Exhibition Reining CHAMPIONSHIP, OTAB

(Must have been entered, shown and judged in any class in this section)

USDF STATEMENT ON ANIMAL WELFARE



The United States Dressage Federation, Inc (USDF) a federation of individual members and over 100 independent organizations throughout the United States, supports the concept of ethical treatment of animals.

Dressage is a classical method of training horses based upon the horse's natural responses, as carried out in a gradual, planned program during which the horse's athletic abilities are improved in a systematic manner. As a result, the horse becomes capable, comfortable, and responsive in partnership with the rider without the use of force. Dressage competition at various levels of achievement is the ultimate test of the training program to determine whether the desired harmony between horse and rider has been achieved.

The rules pertaining to dressage competition prohibit the use of artificial appliances, training aids, and drugs, which would force the horse to submit. Instead, the emphasis is upon training and a cooperative partnership with the rider. Major competitions are carefully monitored to assure that there is no unnecessary force or harshness displayed.

Unlike other horse sports in which horses enter training at a relative immature state, dressage training is usually not seriously begun until the horse is three or four. The top levels of achievement require five or more years of progressive training and it is not usual to see horses in international competition in their late teens. This, in itself, places a premium on good care and soundness throughout the horse's life.

While supporting the concept of animal welfare in its broadest form, the United States Dressage Federation, Inc., also recognizes that it is unrealistic to ascribe human emotions and responses to the horse which in its wild state is a creature of flight, living a hard and precarious existence. Under domestication, the horse is assured ample food, water, and shelter, as well as protection against infectious diseases and damaging parasites, thus leading a longer and healthier life with a high rate of survival.

As an educational organization, USDF has numerous programs, which teach people how to pursue the accepted, humane training methods. A program of certifying instructors also emphasizes protecting the horse's welfare in pursuit of dressage training.

United States Dressage Foundation
4051 Iron Works Parkway, Lexington, KY 40511
Phone: (859) 971-2277
Fax: (859) 971-7722
Email: usdressage@usdf.org
Website: www.usdf.org

WDAA MEMBERSHIP

WDAA MEMBERSHIP STATEMENT:

To be eligible to participate and/or compete as an exhibitor, owner, lessee, agent, coach, or trainer in any Western Dressage class or at any Federation Western Dressage Licensed Competition persons must be active members of WDAA or pay a non-member fee equal to the price of an annual membership for each competition.

Exception: WDAA membership or non-member fee is not required at a Lite Licensed competition. Lessees are considered owners in connection with this membership requirement. In the event of an entry under multiple ownership, only one owner need be a Member or pay a non-member fee. The competition is responsible for listing either the active member or the owner that paid the non-member fee in the results. The competitions will be responsible for forwarding a list of the names of individuals who pay non-member fees at the competition to WDAA with the post competition report. Payment of non-member fees for the purpose of competing does not entitle the individual to any privileges of the WDAA membership.

HOW TO JOIN WDAA

WDAA membership applications are available on the WDAA website:

<https://www.westerndressageassociation.org/>

Adult memberships (18 years and over): \$55; Junior memberships (under 18 as of December 1, 2025): \$40.
WDAA memberships run January – December.



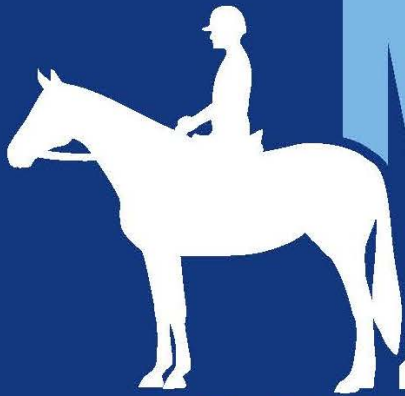
WDAA SHOW #26-291

USEF COMPETITION NAME: Key Classic Benefit Horse Show

USEF #: 554

COMPETITION DIVISION(S) & RATINGS:

English Pleasure, Morgan, Roadster, Saddleseat Equitation, Saddlebred, Morgan Dressage, Western



MAAPP

MINOR ATHLETE ABUSE PREVENTION

LEARN ABOUT MAAP POLICIES



Safe Sport Training



Local Travel



One-On-One Interactions



Social Media & Electronic Communications



Read about these & more at usef.org/MAAPP

REPORT MAAP POLICY VIOLATIONS



usef.org/safe-sport/reporting

859-225-6915 or Text Anonymously 855-682-8733



USDF RECOGNITION

USDF Membership Benefits:

USDF is dedicated to education, the recognition of achievement, and promotion of dressage. For details on member benefits, including educational programs, awards, and other opportunities, refer to the USDF Member Guide or the USDF website at www.usdf.org.

This competition is recognized by USDF 2026

Memberships Defined:

Participating Membership (PM):

A membership issued to an individual directly by USDF. The membership year is December 1 through November 30. PMs are available for 1-year (\$100), 5-years (\$400), or life (\$2,000). A USDF Youth Participating Membership (YPM) is available for individuals who have not reached their 21st birthday by December 1 of the current membership year (\$80). A PM allows the member to compete at USEF-licensed/USDF-recognized competitions and to participate as a rider and/or owner/lessee for all Adequan®/USDF Year-End Awards and the Great American Insurance Group/USDF Regional Dressage Championship program. Group Membership (GM): A membership issued to an individual by USDF when the member name and dues are submitted to USDF through an affiliate Group Member Organization (GMO). The GM year begins December 1 and ends November 30. A GM allows the member to compete at USEF- licensed/USDF-recognized competitions and participate in the USDF Rider Awards Program.

Business Membership (BM):

A membership that runs December 1 through November 30 and is issued to a business or organization directly by USDF. The USDF BM (\$280) offers a wider variety of advertising benefits. BMs satisfy requirements of horse ownership only.

Horse Identification (HID) Number: A one-time tracking number for horses (\$45). Scores earned by a horse with an HID number will be recorded but will NOT be counted towards Adequan®/USDF Year-End Awards. A horse with an HID number is not eligible to compete in Great American Insurance Group/USDF Regional qualifying or championship classes. An HID number can be upgraded to a Lifetime Horse Registration (LHR) for a fee of \$95. If a horse has a USDF LHR it does not need an HID number. An HID number is a one-time fee that does not need to be renewed.

Lifetime Horse Registration (LHR):

A horse with an LHR (\$140) is eligible for Adequan®/USDF Year-End Awards, and eligible to compete in Great American Insurance Group/USDF Regional qualifying and championship classes, assuming requirements for the owner and rider are met. If a horse has an LHR it does not need an HID number. An LHR does not need to be renewed.

How to Join USDF:

Applications for USDF Participating Membership (PM), Business Membership (BM), Horse Identification (HID) number, and Lifetime Horse Registration (LHR) may be found in the following locations:

- On the USDF website: www.usdf.org. You can submit the application online or download the form.
- In the show office at USEF-licensed/USDF-recognized competitions classified by USEF as Dressage Competitions, and Regular Competitions which are open to all breeds.
- By calling or writing the USDF office at (859) 971-2277, 4051 Iron Works Parkway, Lexington, KY 40511

The effective date of membership is the date the form and correct fees are received in the USDF office or, if applying at a competition, the date accepted by the competition secretary, provided the application is signed and dated by the competition secretary, member, and/or horse owner on that same day.



ARABIAN HORSE ASSOCIATION SHOW RECOGNITION

Competition Sponsor: Key Classic Benefit Show

AHA Recognition Show/Recording Number: 260516804

***THE ARABIAN HORSE ASSOCIATION** is a major equine association serving members in the United States and Canada. It registers and maintains a database of more than one million Arabian, Half-Arabian and Anglo-Arabian horses and administers more than \$1.9 million in annual prize money. AHA produces championship events, recognizes over 280 Arabian horse shows and distance rides annually and provides activities and programs that promote breeding and ownership. For information about Arabian, Half-Arabian and Anglo-Arabian horses, call 303-696-4500, e-mail info@ArabianHorses.org or visit ArabianHorses.org.*



The Judges & Stewards Commissioner is responsible for handling written and signed complaints relating to judges' and stewards' conduct when filed by exhibitors, show officials, AHA members or others, and when accompanied by a filing fee [Resolution 5-90]. Other comments, compliments, questions, inquiries are encouraged when appropriate (no filing fee required).
Contact: Judges & Stewards Commissioner, 6030 Greenwood Plaza Blvd, Suite 100, Greenwood Village, CO, 80111; (303) 696-4539.

Join AHA through your local club for the following great member benefits:

- Reduced rate for competition privileges across a variety of disciplines for local, regional and national AHA-approved shows and rides
- Peace of mind with 1 million in personal liability insurance through Equisure
- Preferred rates on horse registrations and transfers
- Preferred rates on Arabian Horse DataSource, the world's largest online Arabian horse resource
- Numerous opportunities to participate in award recognition and prize money programs
- Show circuits for AHA members at local, regional and national levels

Contact your local club: www.schaa.org



Follow Your Dreams!

2026



JUDGES

Park + Pleasure:

ALLISON DEARDORF · JOLENE GALVIN-YERCKIE · FAY LOWRY · KRISTEN STIVERS

Hunter + Western:

JOSH GREER · COBY HOLOWACZ · BRUCE MCCREA · JESSICA SEBRING

Equitation:

SANDRA CURRIER · LYNDA FRESETH · GAYLE LAMPE · MATTHEW ROBERTS

Carriage: **KACY TIPTON-FASHIK**

Dressage: **DOREEN HORSEY · CAROLYN LINDHOLM · MARIE MALONEY**

Hunter + Jumper: **JEANNE MARIE DUNFORD-MILLER**

Ranch + Reining + Trail: **JILL MITCHELL**

Contact: Peggy Hatfield, Secretary · E: peggyhat@aol.com · T: 316.755.0395

GRAND NATIONAL & WORLD CHAMPIONSHIP MORGAN HORSE SHOW®
October 10-17 • Oklahoma City, Oklahoma • www.morgangrandnational.com

©2026 GN&WCMHS



**NOMINATE.
SHOW.
WIN PRIZE
MONEY.**

QUICK FACTS:

Futurity foals and prospects are sought after by buyers. Breeders look for nominated stallions to enhance their breeding programs.

Breeders, stallion owners, and trainers of AMHA/WMF stallion auction sired foals receive dividends throughout a foal's futurity career.

Over \$5 million in prize money has been distributed to World Morgan Futurity nominated horse owners, breeders, and trainers since 1980.



IT'S TIME

Nominate your foals to the World Morgan Futurity!

DEADLINES

December 1st

Weanling Nominations Due
Regular and Alumni nominations due*

April 1st

Eligibility Form Due

Yearling, 2-year old, 3-year old, and 4-year old alumni eligibility fees due*

Penalties may apply after these dates, see website for more details. **No late nominations will be accepted after April 1st of the 2-year old year.**



UNITED PROFESSIONAL HORSEMAN'S ASSOCIATION



The United Professional Horsemen's Association (UPHA) offers several important programs that support and promote the sport and its participants. UPHA Classics has paid out hundreds of thousands of dollars in prize money to owners and trainers to encourage the breeding and showing of high-quality young horses and ponies. The UPHA Challenge Cup promotes Saddle Seat Equitation across all breeding lines and provides physically and mentally challenging opportunities for riders through the Exceptional Challenge Cup. The UPHA Dewey Henderson Benevolent Fund is available to UPHA

Professional Members in good standing to assist with emergency and crisis situations. The Marla Knight Scholarship supports higher education for children of UPHA Professional Members. Additionally, UPHA Ribbons of Service is a youth community service and philanthropy program, with donations benefiting St. Jude Children's Research Hospital and other charitable organizations.

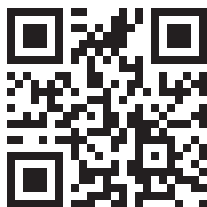
Horse Shows:

The United Professional Horsemen's Association (UPHA) works to improve the horse show industry in cooperation with the American Horse Council, USEF, and various breed organizations by providing safety guidelines and emergency equipment for show ring emergencies, ensuring fairness of competition through established rules, drug testing, proper ring conditions, stabling, and judging, promoting improvements in the overall quality of horse shows including show grounds, footing, and groom facilities, increasing support for shows, show management, and exhibitors, advocating for best practices across the industry, fostering professionalism and ethical standards, and strengthening collaboration between owners, trainers, officials, and organizations to help ensure that horse shows remain successful, sustainable, accessible, and viable for future generations.

Business Relationships:

The United Professional Horsemen's Association (UPHA) strengthens the horse industry by improving sales, camaraderie, and business relationships through active and involved chapters, as well as enhancing communication and trust between owners and trainers. UPHA membership is held to the high standards outlined in the UPHA Code of Ethics, and the organization works to educate lawmakers and industry leaders about trotting breeds, the correctness of gait, and the importance of preserving breed integrity. UPHA is a founding member of the Joint Leadership Council and has helped fund programs to develop and educate professional caretakers, as well as college programs focused on preparing future professional horsemen and women for successful careers in the industry. In addition, UPHA has authored educational pamphlets to introduce families and individuals to the show horse and horse show industry, developed resources to promote responsible participation and horsemanship, and created a SafeSport-compliant contract for use with minor athletes and their parents to help ensure a safe, ethical, and supportive environment for all participants.

For more information visit: UPHAonline.com





Key Classic Benefit Horse Show
May 6-10, 2026

Evergreen Equestrian Park, Monroe, WA

Entries Close April 15, 2026 (Must be postmarked by 4/15 to avoid late

FOR OFFICE USE ONLY

ENTRY FORM FOR USEF CLASSES

OWNER NAME (As per registration papers)
ONLY ONE OWNER PER ENTRY BLANK

OWNERS SECTION (fees)		TRAINER SECTION		RIDER/DRIVER/HANDLER SECTION	
Print Name	Print Name	Print Name	Print Name	Print Name	Print Name
RT/Box/Street	RT/Box/Street	RT/Box/Street	RT/Box/Street	RT/Box/Street	RT/Box/Street
City/State/Country	City/State/Country	City/State/Country	City/State/Country	City/State/Country	City/State/Country
Zip/Postal Code	Zip/Postal Code	Zip/Postal Code	Zip/Postal Code	Zip/Postal Code	Zip/Postal Code
Phone	Phone	Phone	Phone	Phone	Phone
WDAA #	WDAA #	WDAA #	WDAA #	WDAA #	WDAA #
ASHA #	ASHA #	ASHA #	ASHA #	ASHA #	ASHA #
USEF/EC #	USEF/EC #	USEF/EC #	ARHPA #	USEF/EC #	JR Ex. Birth Date
USDF #	USDF #	USDF #	UPHA #	USDF #	UPHA #
E-Mail Address	E-Mail Address	E-Mail Address	E-Mail Address	E-Mail Address	E-Mail Address
LEAVE BLANK (Class Number Under Name)	NAME OF HORSE	TOTAL FEES	DESCRIPTION	HORSE INFORMATION	
			Sex: YOB:	Reg. #	RIDER, DRIVER OR HANDLER
			Color: Height:	USEF HID #	
				USDF #	
				WDAA#	
			Sex: YOB:	Reg. #	
				USEF HID #	
			Color: Height:	USDF #	
				WDAA#	
			Sex: YOB:	Reg. #	
				USEF HID #	
			Color: Height:	USDF #	
				WDAA#	

Number of Horses _____ Date of arrival _____

ATTACH COPIES OF ALL: Registration papers, Amateur Certification, AMHA, ASHA, AHHS, USEF and USDF Membership Cards, USEF Horse ID, WDAA #

USEF FEE PER HORSE (D&M \$15; USEF ADMIN FEE \$8) # _____ @ \$25 = _____
OFFICE CHARGE PER OWNER # _____ @ \$30 = _____
STALLS/TACK ROOMS # _____ @ \$160 = _____
BEDDING FEE (ONE TIME – PER HORSE STALL) # _____ @ \$60 = _____
DRESSAGE STALL & BEDDING (PER NIGHT) # _____ @ \$60 = _____
HAUL-IN FEE # _____ @ \$25 = _____
RV PARKING (PER NIGHT) # _____ @ \$65 = _____
ADVERTISING _____
SPONSORSHIP _____
CLASS FEES _____
WDAA NON-MEMBER FEE _____
TOTAL AMOUNT ENCLOSED _____

Make checks payable to: Key Classic Benefit

Mail to: Sheri Hurst
1073 Estest St., #115 E1
Cajon, CA 90202-7454
(619) 672-4503
Send regular mail or FedEx with NO signature required or email to sherihurst42@gmail.com

ALL ENTRIES FOR TOC (TEST OF CHOICE) CLASSES IN DRESSAGE AND WESTERN DRESSAGE MUST INDICATE THE TESTS THEY WANT TO RIDE ON THIS ENTRY FORM

FEDERATION ENTRY AGREEMENT

By entering a Federation-licensed Competition and signing this entry blank as the Owner, Lessee, Trainer, Manager, Agent, Coach, Driver, Rider, Handler, Vaulteur or Longeur and on behalf of myself and my principals, representatives, employees and agents, I agree that I am subject to the Bylaws and Rules of The United States Equestrian Federation, Inc. (the "Federation") and the local rules of _____ (Competition). I agree to be bound by the Bylaws and Rules of the Federation and of the competition. I will accept as final the decision of the Hearing Committee on any question arising under the Rules, and agree to release and hold harmless the competition, the Federation, their officials, directors and employees for any action taken under the Rules. I represent that I am eligible to enter and/or participate under the Rules, and every horse I am entering is eligible as entered. I also agree that as a condition of and in consideration of acceptance of entry, the Federation and/or the Competition may use or assign photographs, videos, audios, cable - casts, broadcasts, internet, film, new media or other likenesses of me and my horse taken during the course of the competition for the promotion, coverage or benefit of the competition, sport, or the Federation. Those likenesses shall not be used to advertise a product and they may not be used in such a way as to jeopardize amateur status. I hereby expressly and irrevocably waive and release any rights in connection with such use, including any claim to compensation, invasion of privacy, right of publicity, or to misappropriation. The construction and application of Federation rules are governed by the laws of the State of New York, and any action instituted against the Federation must be filed in New York State. See GR908.4.

If not currently a USEF Active Competing member or Subscriber, I acknowledge that I will be enrolled for no cost as a USEF Fan and my USEF Fan Account will continue to annually automatically renew in USEF's sole discretion. Additionally I acknowledge that the benefits of a USEF Fan are subject to change without notice. USEF may in its sole discretion, at any time, terminate my USEF Fan status. I acknowledge that I may opt out at any time by going to My USEF Dashboard or calling (859) 810-8733

BY SIGNING BELOW, I AGREE that I have read, understand, and agree to be bound by all applicable Federation Bylaws, rules, and policies including the USEF Safe Sport Policy and Minor Athlete Abuse Prevention Policies (MAAPP) as published at www.usef.org, as amended from time to time, as well as all terms and provisions of this Prize List. If I am signing and submitting this Agreement electronically, I acknowledge that my electronic signature shall have the same validity, force and effect as if I affixed my signature by my own hand.

Rider/Driver/Handler

Signature: _____

Print Name: _____

Parent/Guardian Signature: (Required if Rider/Driver/Handler is a minor) _____

Print Parent/Guardian Name: _____

Is Rider/Driver a U. S. Citizen: Yes No

Owner/Agent (mandatory)

Signature: _____

Print Name: _____

Trainer (mandatory)

Signature: _____

Print Name: _____

Emergency Contact Phone No. _____



WAIVER AND RELEASE OF LIABILITY, ASSUMPTION OF RISK AND INDEMNITY AGREEMENT

For and in consideration of United States Equestrian Federation, Inc. dba US Equestrian ("USEF") allowing me, the undersigned, to participate in any capacity (including as a rider, driver, handler, vaulter, longeur, lessee, owner, agent, coach, official, trainer or volunteer) in a USEF sanctioned, licensed or approved event or activity, including but not limited to equestrian clinics, practices, shows, competitions and related or incidental activities and Key Classic Benefit Horse Show ("USEF Event" or "USEF Events"); I, for myself, and on behalf of my spouse, children, heirs and next of kin, and any legal and personal representatives, executors, administrators, successors,, and assigns, hereby agree to and make the following contractual representations pursuant to this Agreement (the "Agreement"):

A. RULES AND REGULATIONS: I hereby agree that I have read, understand, and agree to be bound by all applicable Federation Bylaws, rules, and policies including the USEF Safe Sport Policy and Minor Athlete Abuse Prevention Policies (MAAPP) as published at www.usef.org, as amended from time to time.

B. ACKNOWLEDGMENT OF RISK: I knowingly, willingly, and voluntarily acknowledge the inherent risks associated with the sport of equestrian and know that horseback riding and related equestrian activities are inherently dangerous, and that participation in any USEF Event involves risks and dangers including, without limitation, the potential for serious bodily injury (including broken bones, head or neck injuries), sickness and disease (including communicable diseases), trauma, pain & suffering, permanent disability, paralysis and death; loss of or damage to personal property (including my mount & equipment) arising out of the unpredictable behavior of horses; exposure to extreme conditions and circumstances; accidents involving other participants, event staff, volunteers or spectators; contact or collision with other participants and horses, natural or manmade objects; adverse weather conditions; facilities issues and premises conditions; failure of protective equipment (including helmets); inadequate safety measures; participants of varying skill levels; situations beyond the immediate control of the USEF Event organizers and competition management; and other undefined, not readily foreseeable and presently unknown risks and dangers ("Risks").

EQUINE ACTIVITY LIABILITY ACT WARNING:

CAUTION: HORSEBACK RIDING AND EQUINE ACTIVITIES CAN BE DANGEROUS. RIDE AT YOUR OWN RISK.

Under the laws of most States, an equine activity sponsor or equine professional is not liable for any injury to, or the death of, a participant in equine activities resulting from the inherent risks of equine activities.

C. ASSUMPTION OF RISK: I understand that the aforementioned Risks may be caused in whole or in part or result directly or indirectly from the negligence of my own actions or inactions, the actions or inactions of others participating in the USEF Events, or the negligent acts or omissions of the Released Parties defined below, and I hereby voluntarily and knowingly assume all such Risks and responsibility for any damages, liabilities, losses, or expenses that I incur as a result of my participation in any USEF Events. I also agree to be responsible for any injury or damage caused by me, my horse, my employees or contractors under my direction and control at any USEF Event.

D. WAIVER AND RELEASE OF LIABILITY, HOLD HARMLESS AND INDEMNITY: In conjunction with my participation in any USEF Event, I hereby release, waive and covenant not to sue, and further agree to indemnify, defend and hold harmless the following parties: USEF, USEF Recognized Affiliate Associations, the United States Olympic & Paralympic Committee (USOPC), USEF clubs, members, Event participants (including athletes/riders, coaches, trainers, judges/officials, and other personnel), the Event owner, licensee, and competition managers; the promoters, sponsors, or advertisers of any USEF Event; any charity or other beneficiary which may benefit from the USEF Event; the owners, managers, or lessors of any facilities or premises where a USEF Event may be held; and all directors, officers, employees, agents, contractors, and volunteers of any of the aforementioned parties (**Individually and Collectively, the "Released Parties" or "Event Organizers"**), with respect to any liability, claim(s), demand(s), cause(s) of action, damage(s), loss, or expense (including court costs and reasonable attorney fees) of any kind or nature ("**Liability**") which may arise out of, result from, or relate in any way to my participation in the USEF Events, including claims for Liability caused in whole or in part by the negligent acts or omissions of the Released Parties.

E. COMPLETE AGREEMENT AND SEVERABILITY CLAUSE: This Agreement represents the complete understanding between the parties regarding these issues and no oral representations, statements or inducements have been made apart from this Agreement. If any provision of this Agreement is held to be unlawful, void, or for any reason unenforceable, then that provision shall be deemed severable from this Agreement and shall not affect the validity and enforceability of any remaining provisions.

I HAVE CAREFULLY READ THIS DOCUMENT IN ITS ENTIRETY, UNDERSTAND ALL OF ITS TERMS AND CONDITIONS, AND KNOW IT CONTAINS AN ASSUMPTION OF RISK, RELEASE AND WAIVER FROM LIABILITY, AS WELL AS A HOLD HARMLESS AND INDEMNIFICATION OBLIGATIONS.

By signing below, I (as the participant or as the Parent/Legal Guardian of the minor identified below) hereby accept and agree to the terms and conditions of this Agreement in connection with my (or the minor's) participation in any USEF Event. If, despite this Agreement, I, or anyone on my behalf or the minor's behalf, makes a claim for Liability against any of the Released Parties, I will indemnify, defend and hold harmless each of the Released Parties from any such Liabilities as the result of such claim.

The parties agree that this agreement may be electronically signed. The parties agree that the electronic signatures appearing on this agreement are the same as handwritten signatures for the purposes of validity, enforceability, and admissibility.

RIDER/DRIVER/HANDLER/VAULTER/LONGEUR OWNER TRAINER OFFICIAL STAFF VOLUNTEER COACH (IF APPLICABLE)

Signature: _____ Date: _____ Print Name: _____

Parent/Guardian Signature: (Required if Rider/Driver/Handler/Vaulter/Longeur is a minor) _____ Date: _____

Print Parent//Guardian Name: _____ Emergency Contact Phone No. _____

11.16.23

UNITED STATES EQUESTRIAN FEDERATION : 4001 WING COMMANDER WAY : LEXINGTON, KY 40511 : 859.810.8733 : FAX 859.721.1151 : USEF.ORG

© United States Equestrian Federation® All rights reserved. Reproduction without permission is strictly prohibited.



Key Classic Youth of the Year Contest

Leadline, Walk/Trot, Junior, & Senior Divisions Available
All Ages Welcome!

Written Exam
Oral Presentation
Judging Contest
Horsemanship Pattern

Name: _____

Address: _____

City: _____

State: _____ Zip: _____ Phone: _____

Age: _____ Division: _____

Email: _____ T-Shirt Size: _____

To enter, complete and return this form to:
Linda Collins by April 5th

Please email to: lcollins13579@aol.com
or text to: 206-200-2099

Western Versatility Highpoint

The Western Versatility Highpoint award demonstrates the athletic ability, versatility, and trainability of today's Morgan Western horse. To qualify for the Western Versatility Highpoint award a horse & rider combination must enter and show in at least FOUR OF THE FIVE listed disciplines REINING, TRAIL, RANCH RIDING, RANCH RAIL and any WESTERN DRESSAGE CLASS. AND RANCH CONFORMATION. Entry in Ranch Conformation is required.

- Only one (1) class from each discipline will count towards the final tabulation.
- Points are earned in individual classes and then combined to determine the Western Versatility Highpoint award.
- Points are assigned based on the number of entries in the class.
- Any classes designated as "Jr. Horse" count toward the Open category.
- There is no entry fee to compete for the Western Highpoint award title. However, a completed form **MUST** be turned into the official Show Office before the start of the show to be eligible. **Forms must be received before the start of the show.**
- It is the responsibility of the exhibitor to complete and submit the form to the show office designate clearly which classes they intend to utilize for points in each discipline.

Please complete & submit the form below

HORSE NAME: _____

RIDER'S NAME: _____

Reining Class # _____ Class Name: _____

Trail Class # _____ Class Name: _____

Ranch Riding Class # _____ Class Name: _____

Ranch Rail Class # _____ Class Name: _____

Western Dressage Class # _____ Class Name: _____

Ranch Conformation Class # _____ Class Name: _____

Person Completing Form & Phone # _____

Please provide contact information in case we have any questions.

Bring this completed form to the Show Office

FORM MUST BE RECEIVED PRIOR TO START OF THE SHOW

**AWARD WILL BE PRESENTED ON FRIDAY EVENING
DURING THE PARADE OF CHAMPIONS**